


Sandland  **Packaging**
ANY BOX ANY SIZE
BESPOKE BOX MANUFACTURER

FEFCO CODES



**A PAS2060
CarbonNeutral
Company**

All FEFCO designs
provided by Sandland
Packaging are certified
CarbonNeutral



Contents

Passionate about packaging	PG 4
Providing Packaging Excellence	PG 5
The Design Process	PG 6
FEFCO 0100	PG 7
FEFCO 0200	PG 8
FEFCO 0300	PG 15
FEFCO 0400	PG 21
FEFCO 0500	PG 36
FEFCO 0600	PG 39
FEFCO 0900	PG 42

The Question we get asked all the time is... Can you make it?



It's understandable that we are constantly asked for new and better ideas for all sizes and shapes of packaging. We have the necessary range of machinery to provide multiple options for all bespoke packaging needs; we have the knowledge gained from many years of crafting the best packaging options and, most importantly, we have the top design team who will make sure you are provided with the perfect bespoke packaging solution whatever your product needs.

This guide has been created to provide our customers with a better idea of the full range and capability of the FEFCO designs that Sandland Packaging can provide. If it is in this book, we can make it! We've also included helpful annotations to give additional guidance on how these designs can be used.

The beauty of being a bespoke manufacturer is we can provide design and support for any requirement to help fit your overall needs. Just ask the question above – we're sure to answer Yes!

ANY BOX ANY SIZE



All certified CarbonNeutral

Passionate about packaging

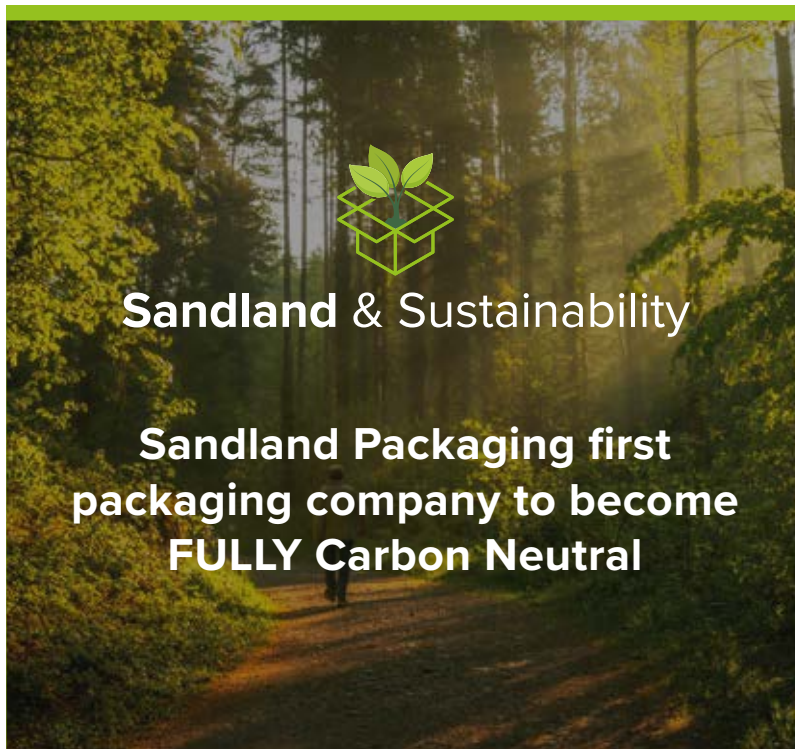
We understand and acknowledge the specialist requirements and individual needs of all our customers, and strive to meet them with professionalism, efficiency and a competitive approach. Our team are knowledgeable and experienced in packaging design and will provide the best solution for your products.

Using our design process, our team will work with you to develop the best packaging solution. Whether this is for an existing need you'd like us to improve or a new requirement that demands a bespoke solution, Sandland Packaging are experts in corrugated packaging design.



Providing Packaging Excellence

We were established over 35 years ago and have grown to become a leading manufacturer of high quality, fast turnaround, bespoke corrugated packaging. With a reputation for design expertise and excellent service, we specialise in supplying more complex customer requirements for a wide range of organisations and businesses including manufacturers, automotive and ecommerce companies.



Sandland & Sustainability

Sandland Packaging first packaging company to become FULLY Carbon Neutral

Sandland Packaging has continued its pioneering environmental journey to become the first corrugated sheet plant in the UK to become fully carbon neutral by measuring and offsetting ALL carbon emissions across Scope 1 and 2 and all 15 categories in Scope 3.

Our customers can report zero emissions in their own GHG accounting on the purchases of our boxes, thus reporting a reduction in their emissions.



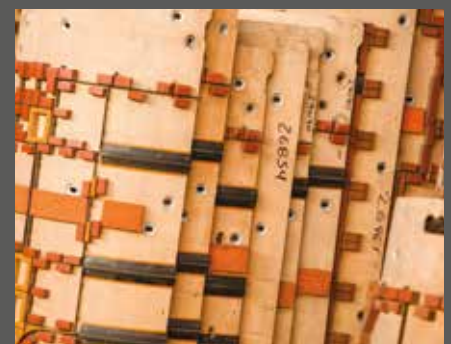
Our products are only sold FSC upon request



Trusted to deliver



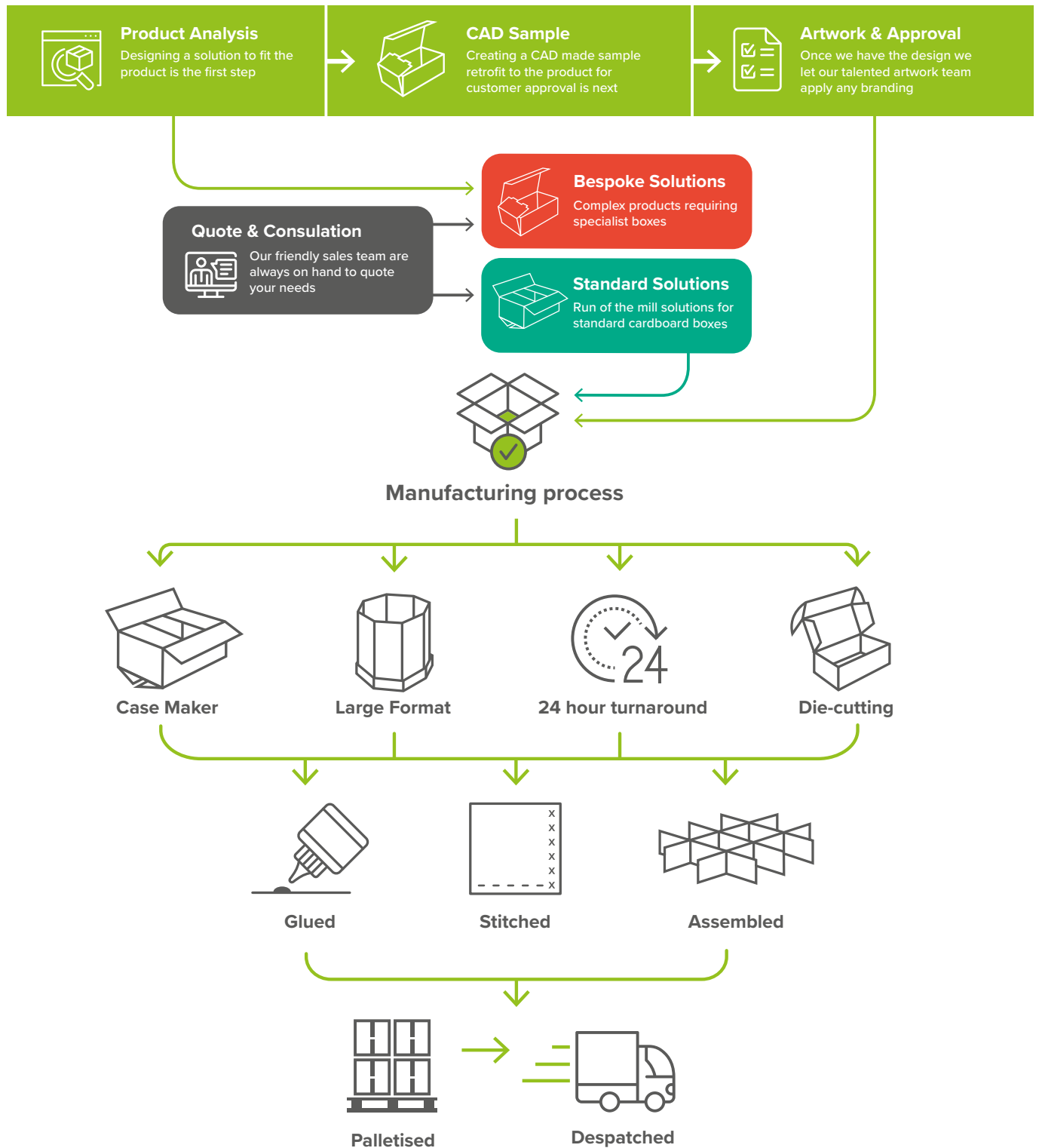
Quality in everything we do



Passionate about packaging

The Design Process

Using our design process, our team will work with you to design perfect fit packaging. Whether this is for an existing design you'd like us to improve or a new requirement that demands a bespoke solution, Sandland Packaging are experts in corrugated packaging design.

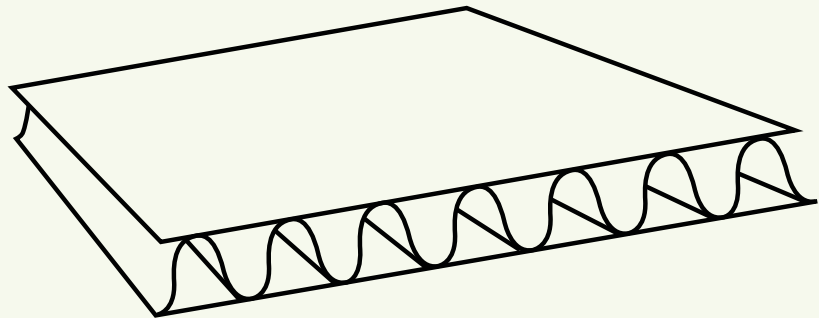




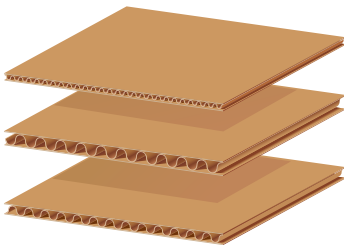
◆ 0100

Sheet form pre-manufacturing raw material supplied in sheet form on pallets which can be used as a layerpad and is the raw material used in pre-production.

0110



Single Wall

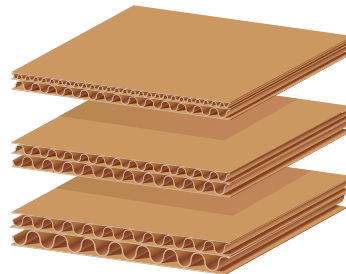


E Flute 1.2 - 2.0mm

C Flute 3.5 - 4.0mm

B Flute 2.4 - 3.0mm

Double Wall



EB Flute 3.6 - 4.1mm

BC Flute 6.0 - 7.6mm

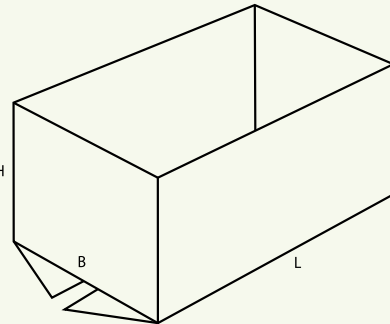
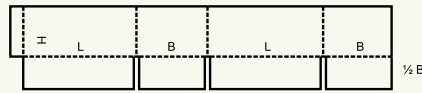
CA Flute 8.7mm



◆ 0200

Slotted-type boxes consist of basically one piece with a glued, stitched or taped manufacturers joint and top and bottom flaps. They are shipped flat, ready to use and require closing using the flaps provided.

0200



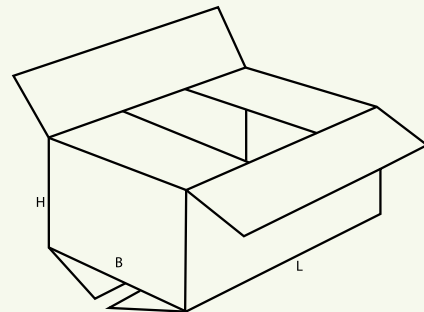
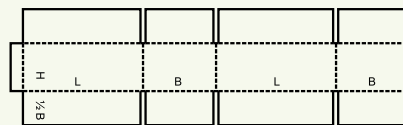
Casemaker

Large Format Case

Glued or Stitched

Common in large format, used with a cap 0452/0422

0201



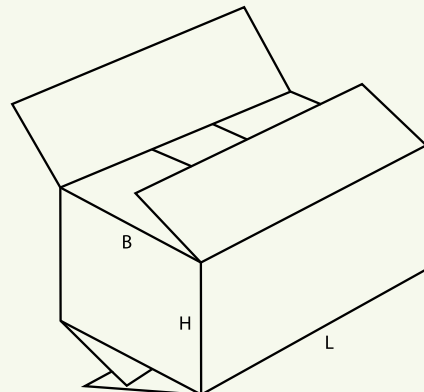
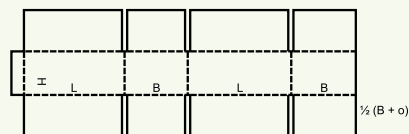
Casemaker

Large Format Case

Glued or Stitched

Standard box style used in all size applications

0202



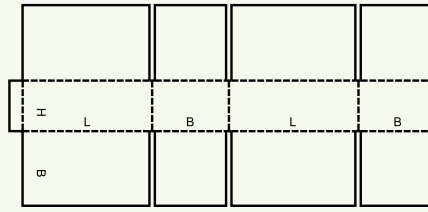
Casemaker

Large Format Case

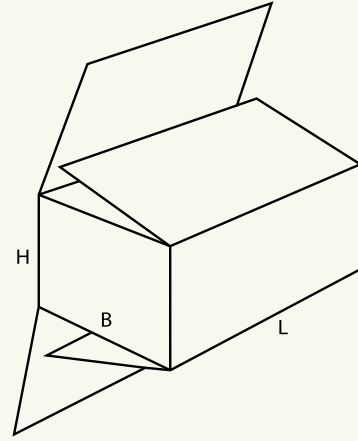
Glued or Stitched

Slightly overlapping panels, used for stitching areas

0203



Overlapping ends, used in slim cases to give protection on the ends

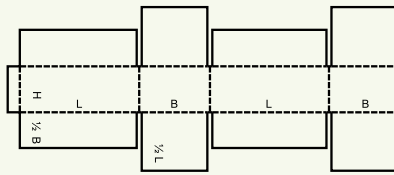


Casemaker

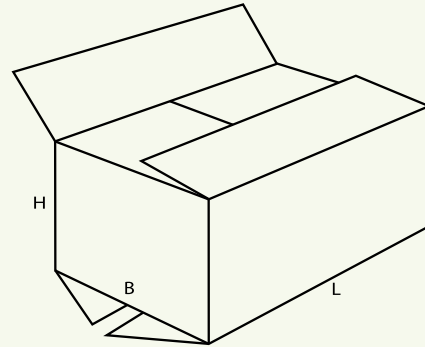
Large Format Case

Glued or Stitched

0204



Inner meeting flaps for balanced inner measurements

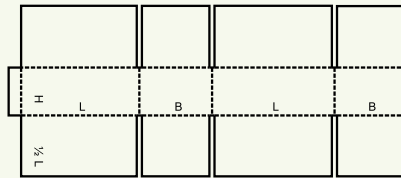


Casemaker

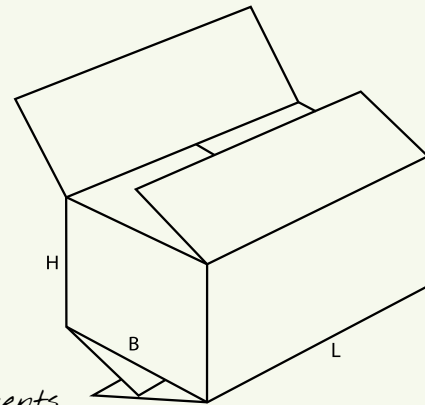
Diecutting

Glued or Stitched

0205



Inner meeting flaps for balanced inner measurements

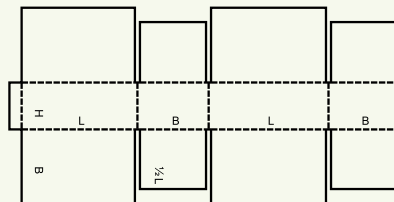


Casemaker

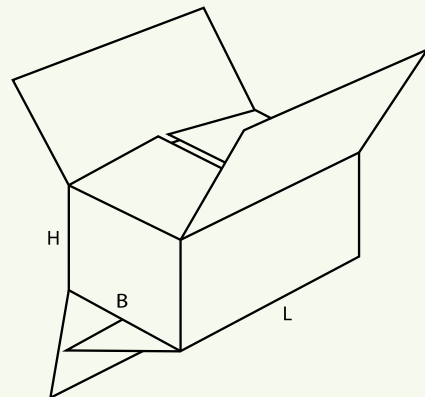
Large Format Case

Glued or Stitched

0206



Inner meeting flaps for balanced inner measurements

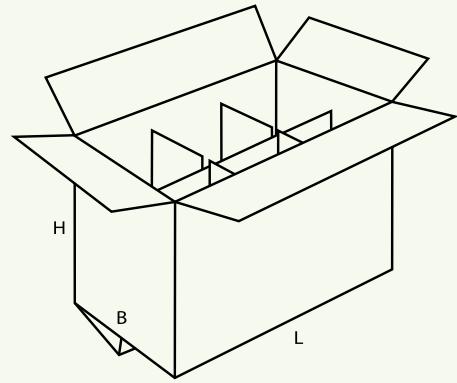
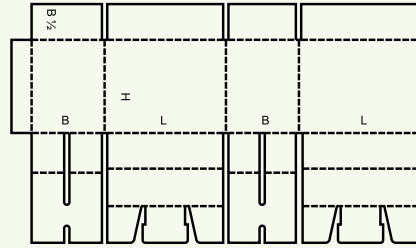


Casemaker

Diecutting

Glued or Stitched

0207



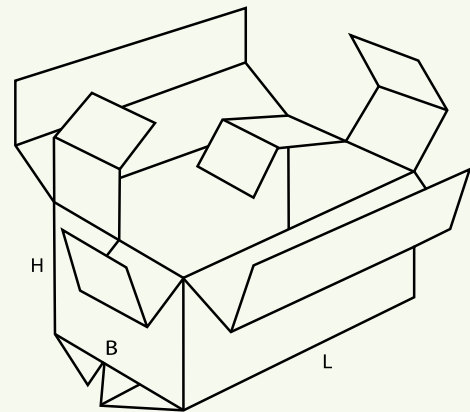
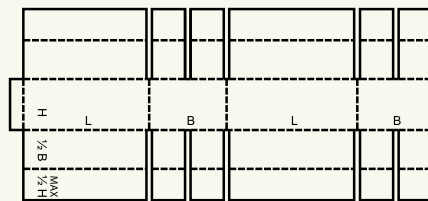
Six cell divisional case, great for wine / bottle / glasses

Casemaker

Diecutting

Glued or Stitched

0208



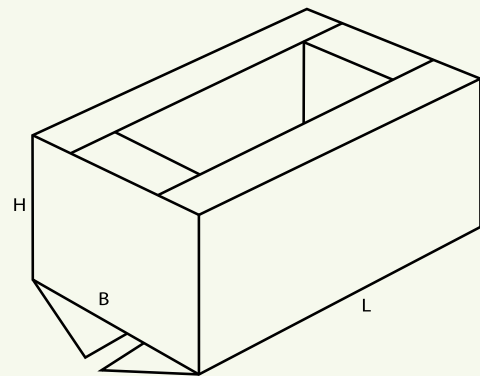
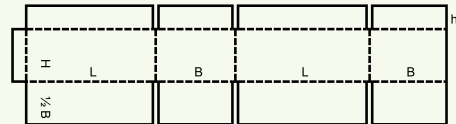
Another six cell divider concept

Casemaker

Diecutting

Glued or Stitched

0209



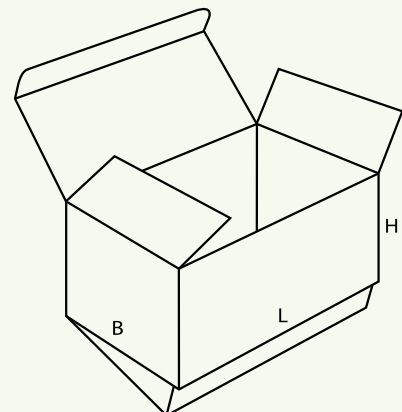
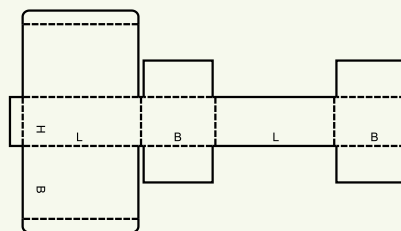
Can be used in large format and heavy duty, helps with stacking

Casemaker

Large Format Case

Glued or Stitched

0210

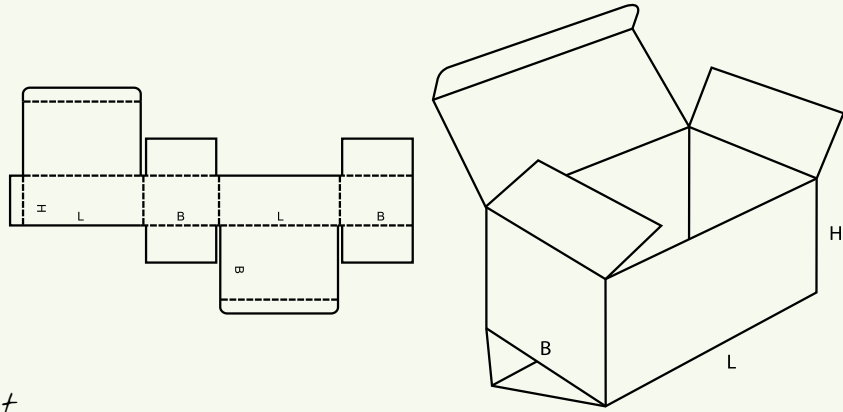


Standard enclosure diecut

Diecutting

Glued or Stitched

0211

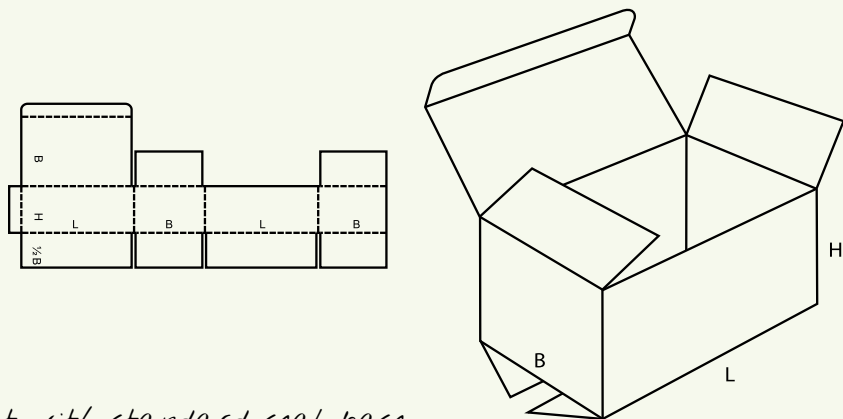


Standard enclosure diecut

Diecutting

Glued or Stitched

0212

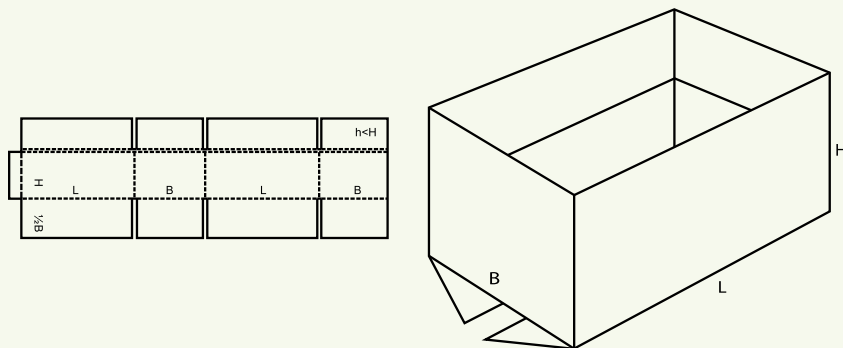


Standard enclosure diecut with standard seal base

Diecutting

Glued or Stitched

0214



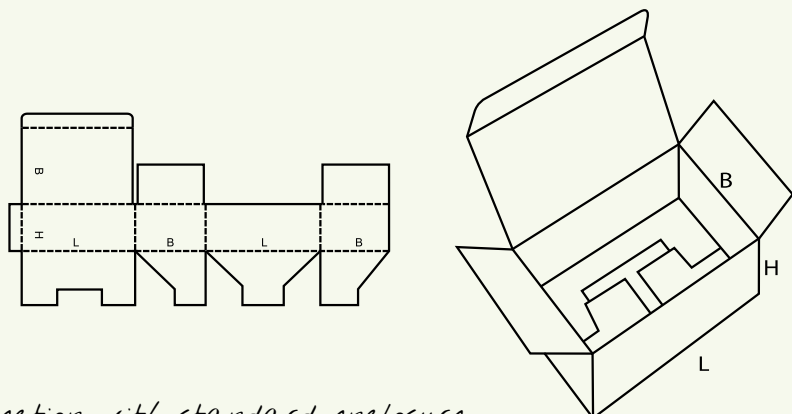
Reversed in flaps to increase strength at the top

Casemaker

Large Format Case

Glued or Stitched

0215

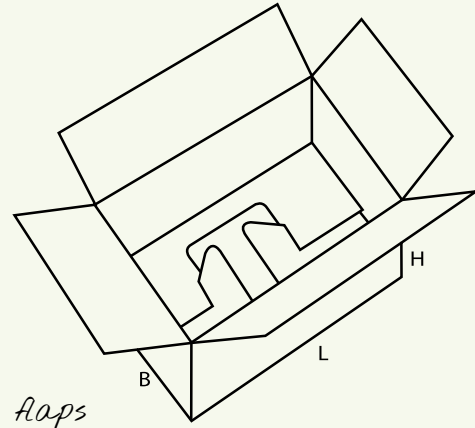
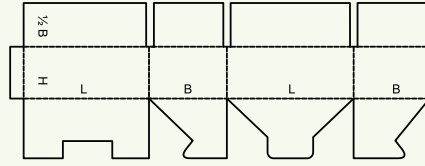


Press lock base for speed erection with standard enclosure

Diecutting

Glued or Stitched

0216

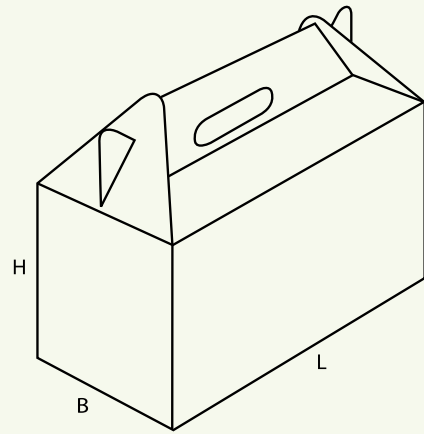
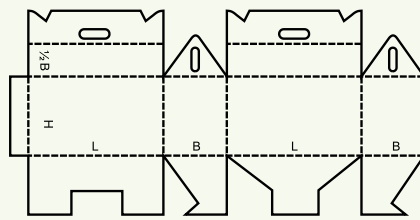


Diecutting

Glued or Stitched

Press lock base for speed erection with standard flaps

0217

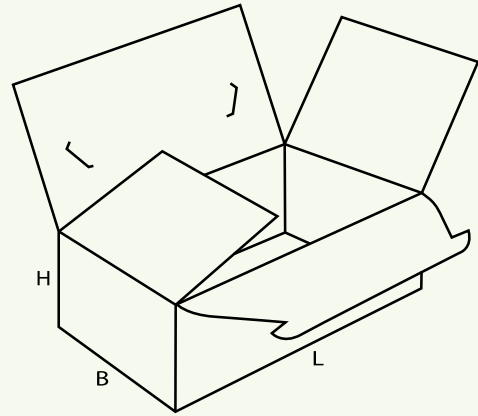
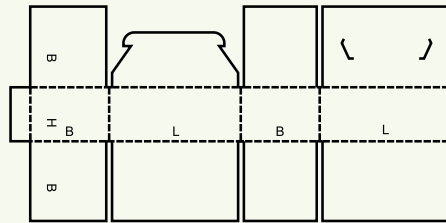


Diecutting

Glued or Stitched

Press lock carry case

0218

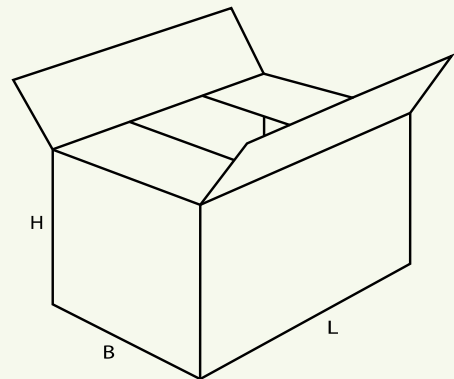
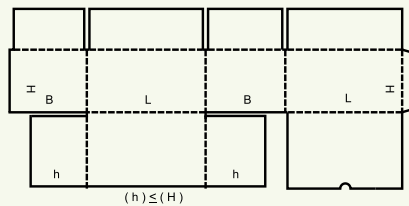


Diecutting

Glued or Stitched

Tab in top locking case with overlapping base

0225

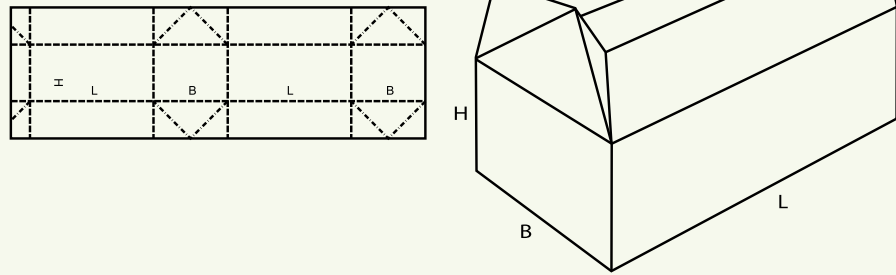


Diecutting

Glued or Stitched

Fully enclosed base concept

0226

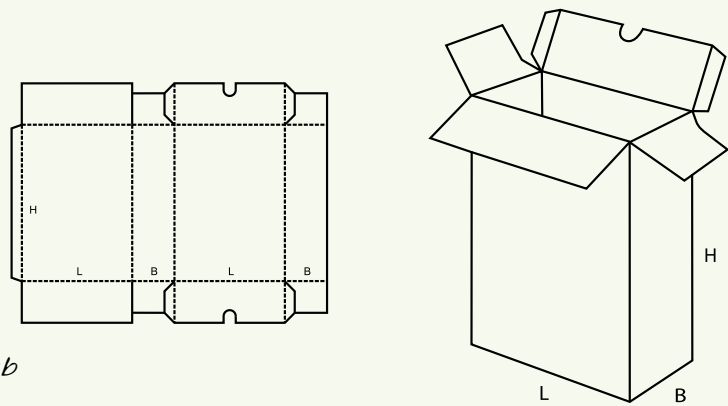


Pinch folding top

Diecutting

Glued or Stitched

0227

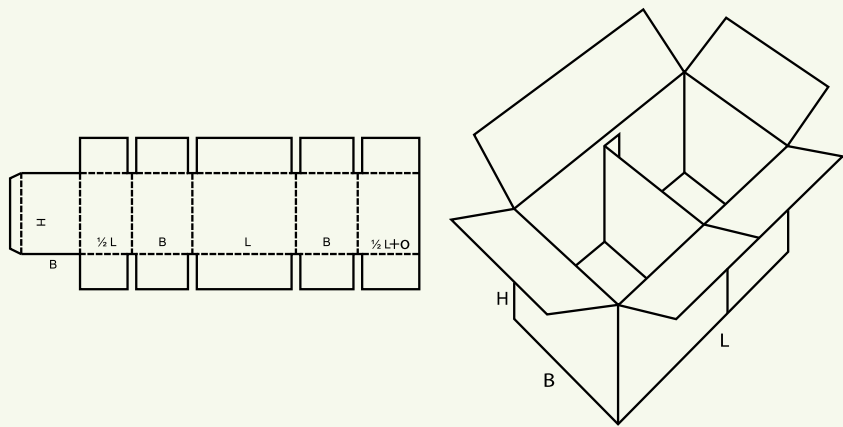


Fully overlapping tops with thumb hole pull for the internal panel

Diecutting

Glued or Stitched

0228

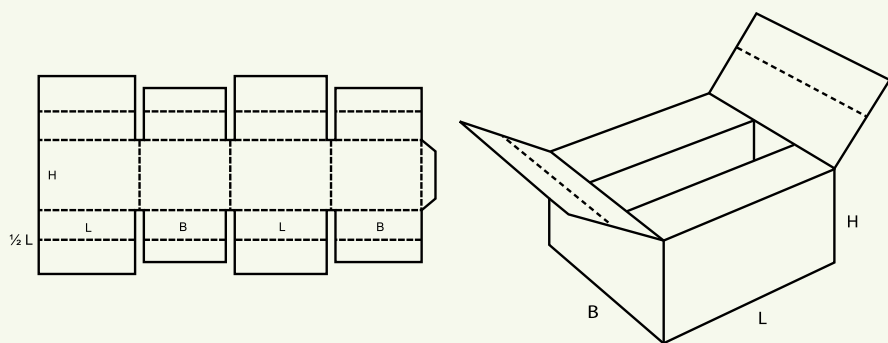


Two cell divisional style

Diecutting

Glued or Stitched

0229

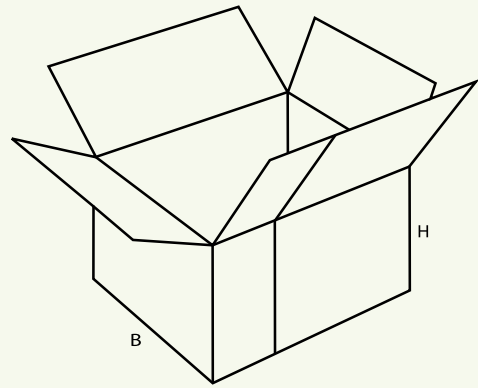
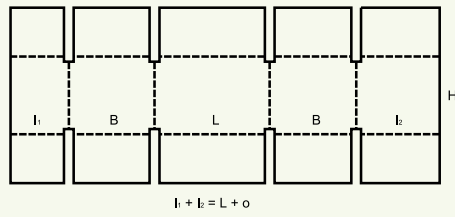


Multi divisional box for bespoke applications

Diecutting

Glued or Stitched

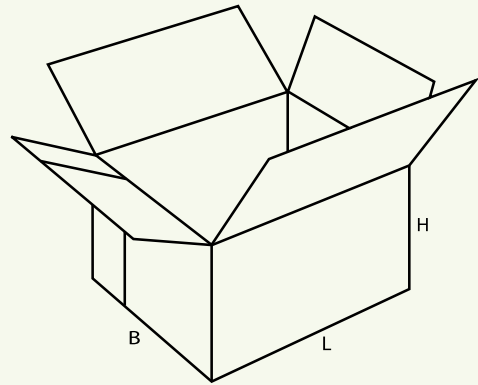
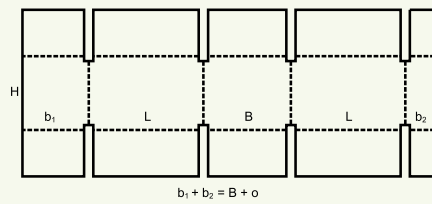
0230



External glue flap application on the length

Casemaker
Large Format Case
Diecutting
Glued or Stitched

0231



External glue flap application on the width

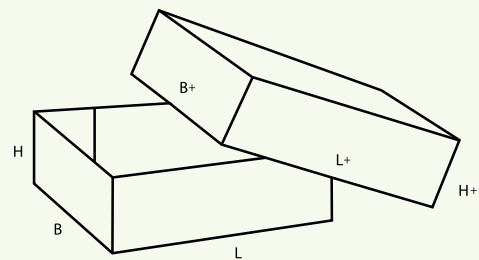
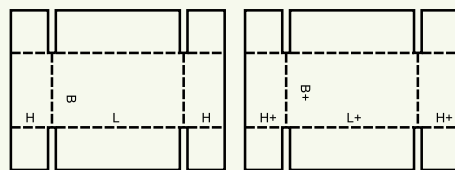
Diecutting
Glued or Stitched



◆ 0300

Telescope-type boxes consisting of more than one piece and are characterised by a lid and/or bottom telescoping over the body of the box.

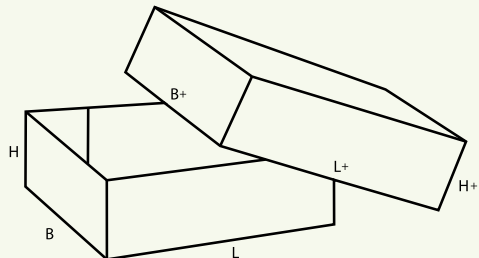
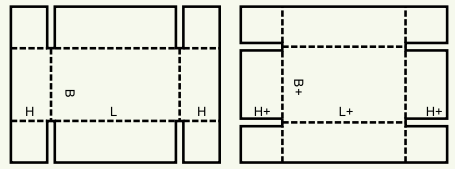
0300



Used in a variety of slim panel applications

Casemaker
Large Format Case
Diecutting
Glued or Stitched

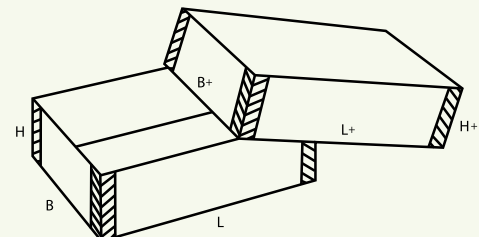
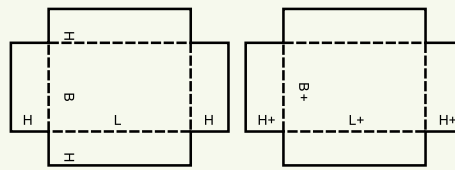
0301



As above but with the tabs alternating so not to conflict when closing

Casemaker
Large Format Case
Diecutting
Glued or Stitched

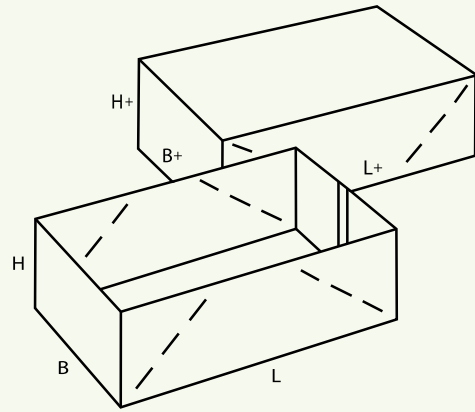
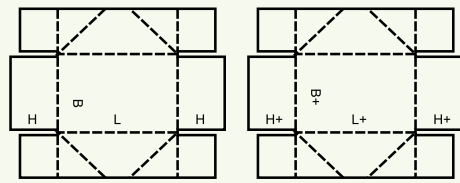
0302



Tape sealed corners

Diecutting

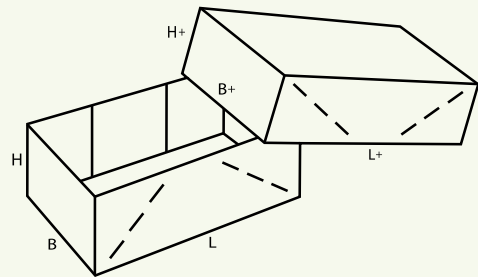
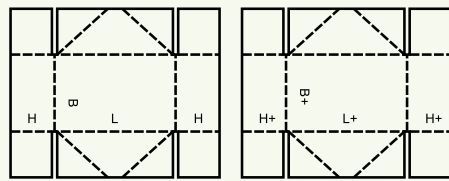
0303



Creases added to fold the corners flat

Diecutting

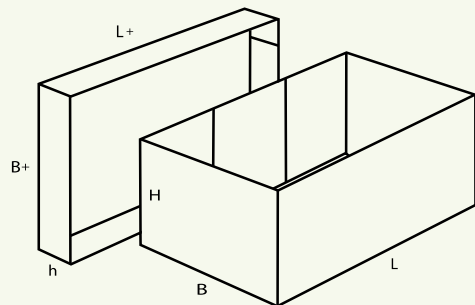
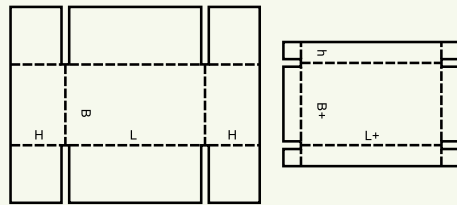
0304



As above but the creases fold the alternate panel

Diecutting

0306



Fully enclosed base concept with an 0452 cap

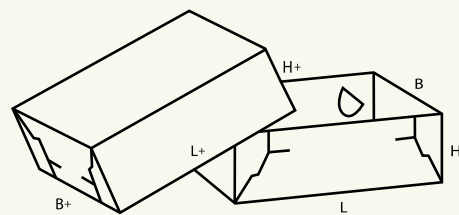
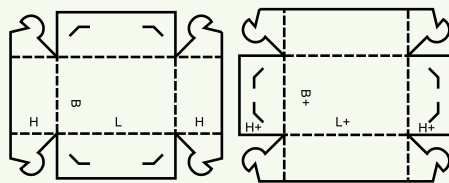
Casemaker

Large Format Case

Diecutting

Glued or Stitched

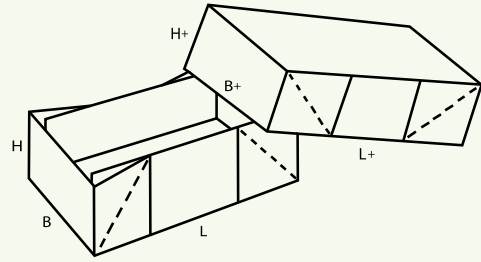
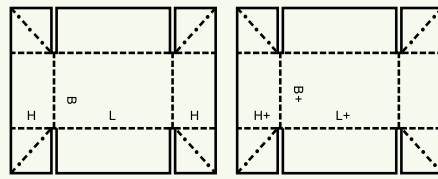
0307



Locking tab tray, allows corners to be sealed after product is in place

Diecutting

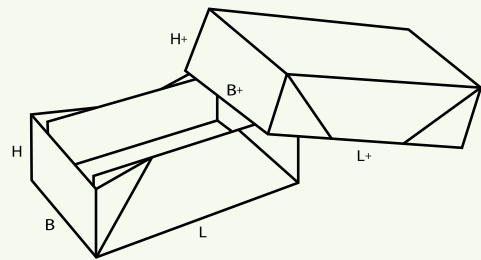
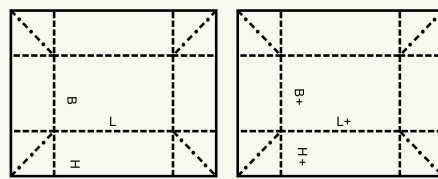
0308



Diecutting

External creases on the assembly with slots

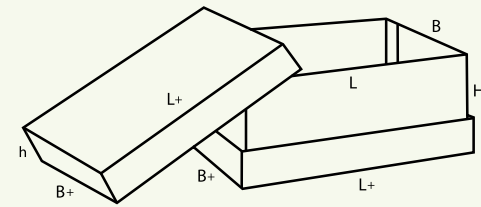
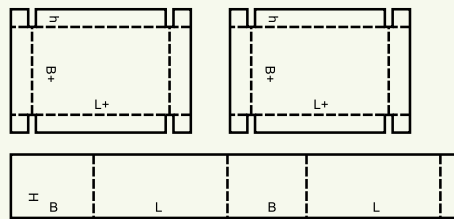
0309



Diecutting

External creases on the assembly without slots

0310



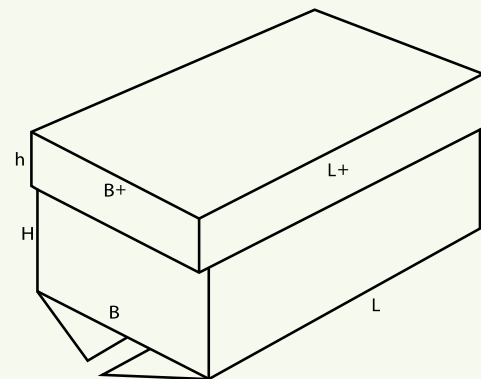
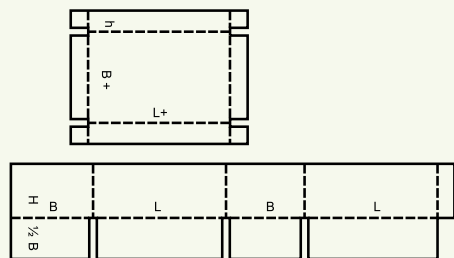
Casemaker

Large Format Case

Glued or Stitched

0501 Cap tray sleeve set with 0452 caps

0312



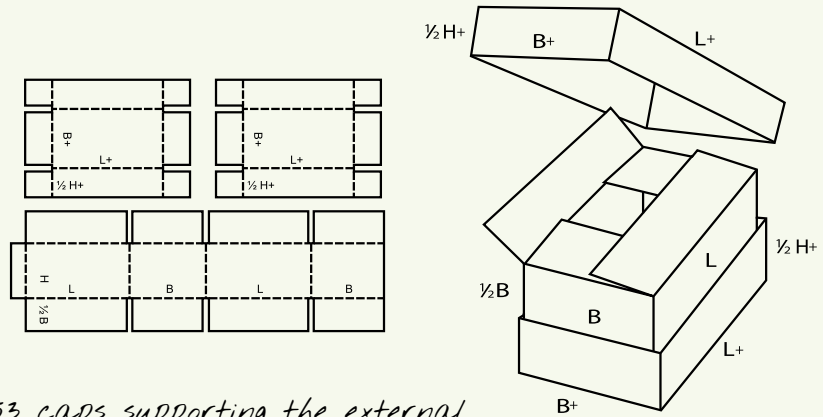
Casemaker

Large Format Case

Glued or Stitched

0200 Cap tray set with an 0453 cap

0313



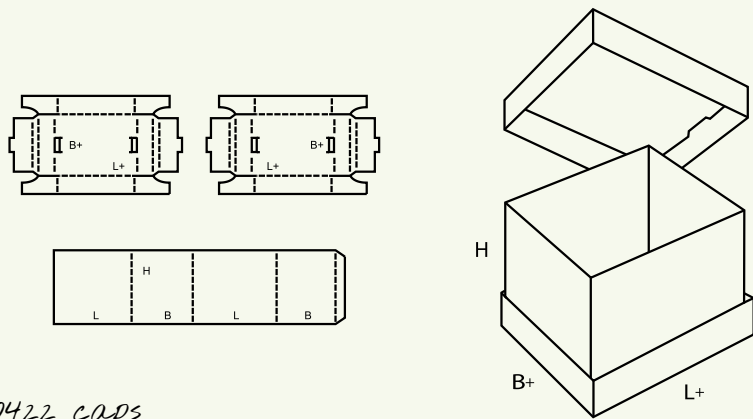
0201 Cap tray set with 0453 caps supporting the external

Casemaker

Large Format Case

Glued or Stitched

0314



0501 Cap tray sleeve set with 0422 caps

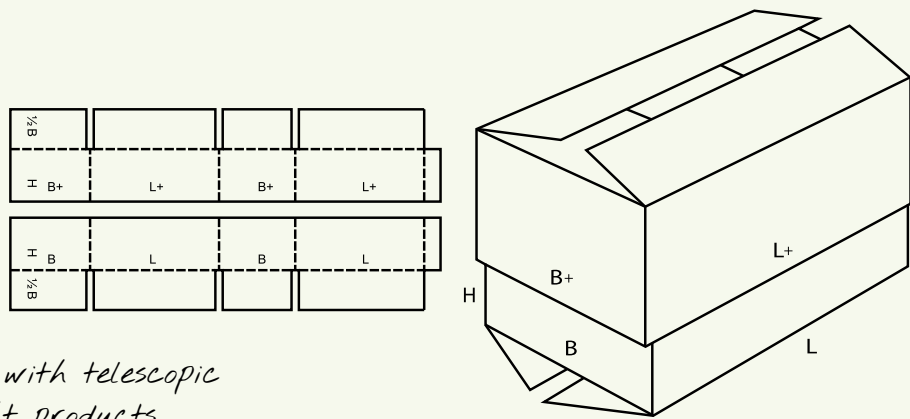
Casemaker

Large Format Case

Diecutting

Glued or Stitched

0320



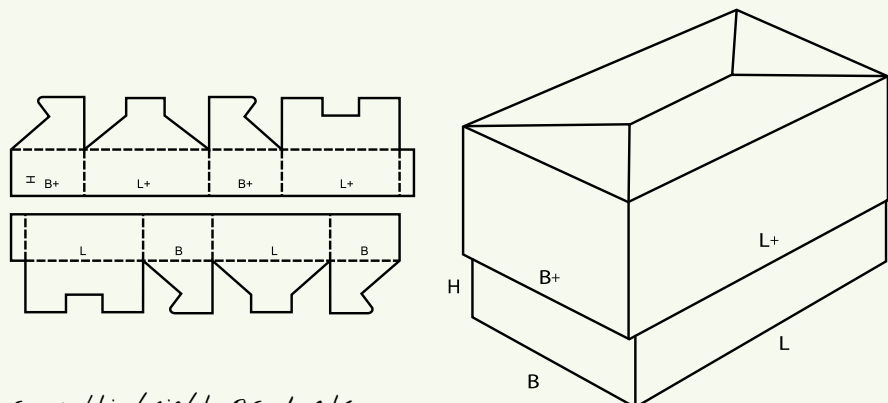
Male & female 0200 with telescopic ability on multi height products

Casemaker

Large Format Case

Glued or Stitched

0321

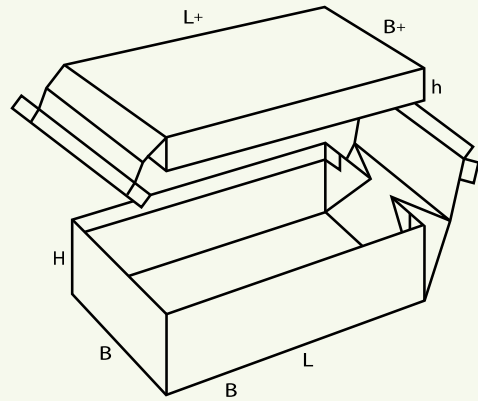
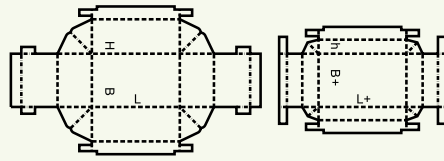


Envelope closure set for multi height products

Diecutting

Glued or Stitched

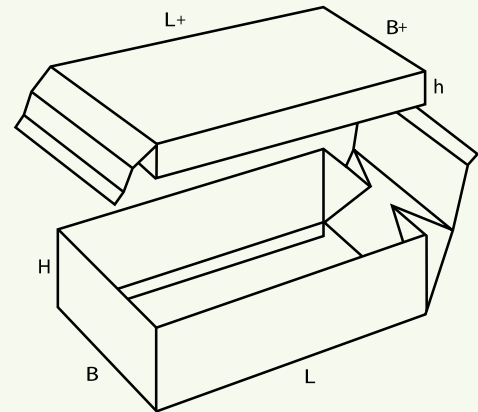
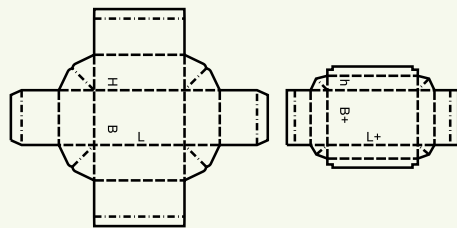
0322



Diecutting

Friction locking set, very unique and rarely used

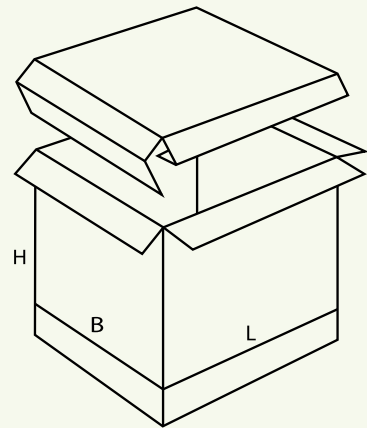
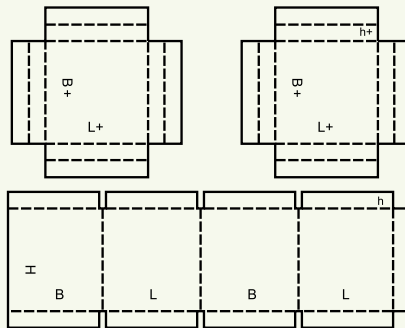
0323



Diecutting

Friction locking set, very unique and rarely used

0325



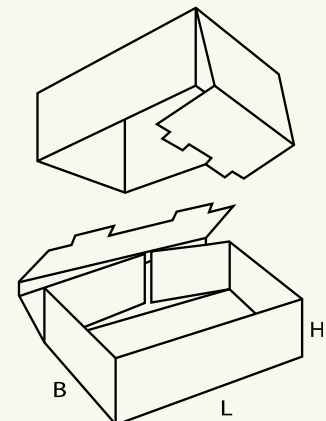
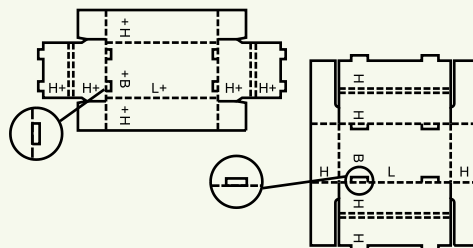
Casemaker

Large Format Case

Glued or Stitched

Very unique internal cap fitment set

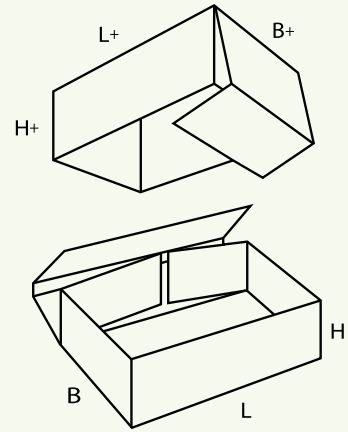
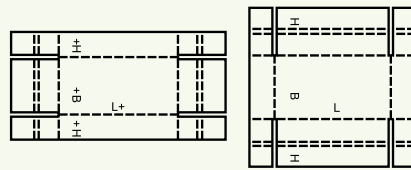
0330



Diecutting

Self assembly set using an 0422 & 0423 to create a cap and tray

0331



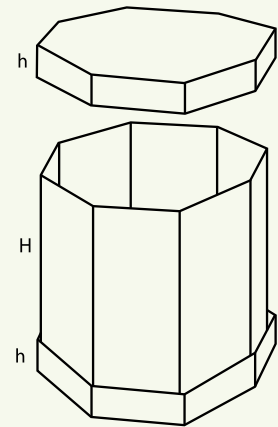
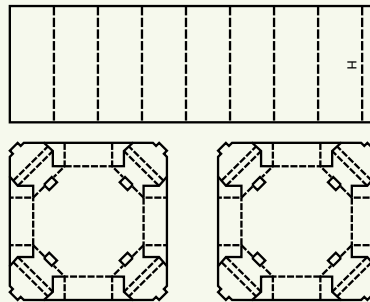
Cap tray set used with friction locking tabs

Casemaker

Large Format Case

Diecutting

0351



Octobin with symmetrical sides, commonly used in large formats

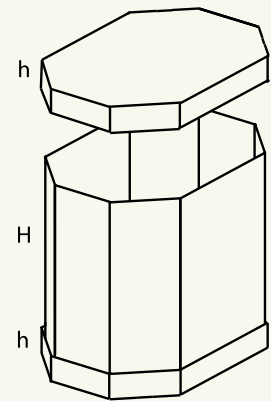
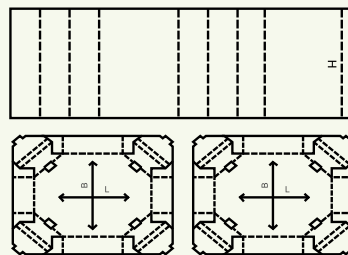
Casemaker

Large Format Case

Diecutting

Glued or Stitched

0352



Octobin with longer side panels

Casemaker

Large Format Case

Diecutting

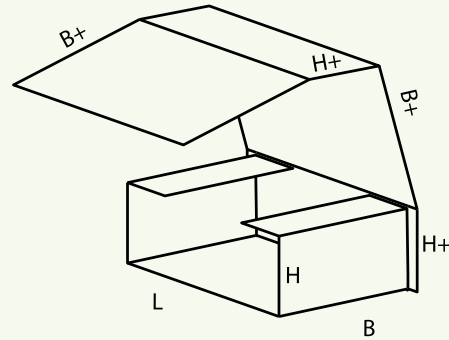
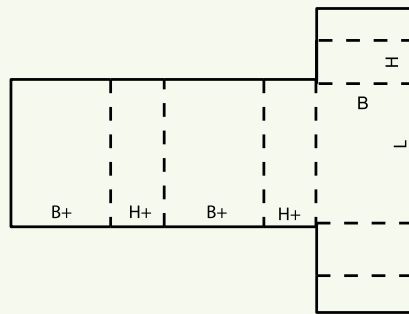
Glued or Stitched



◆ 0400

Folder-type boxes and trays usually consist of only one piece of board. The bottom of the box is hinged to form two or all side walls and the cover. Locking tabs, handles, display panels etc., can be incorporated in some designs.

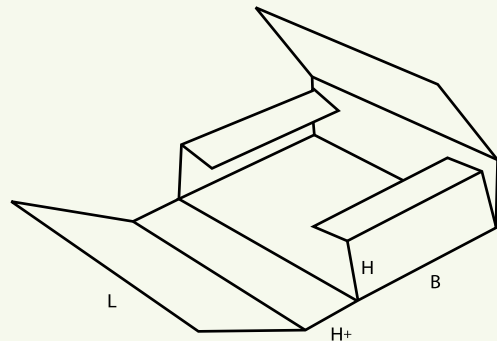
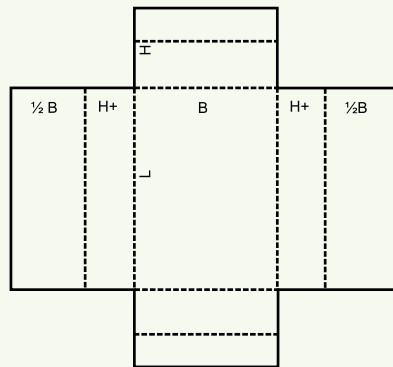
0400



Diecutting

Book wrap style

0401

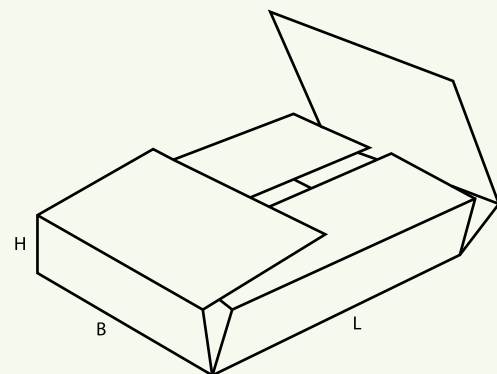
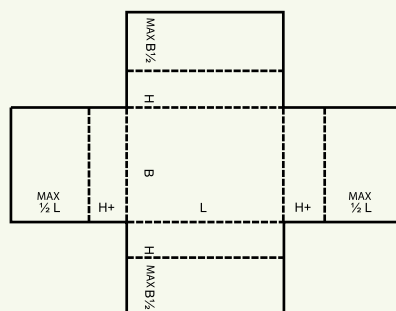


Large Format Case

Diecutting

Larger flatter panels

0402

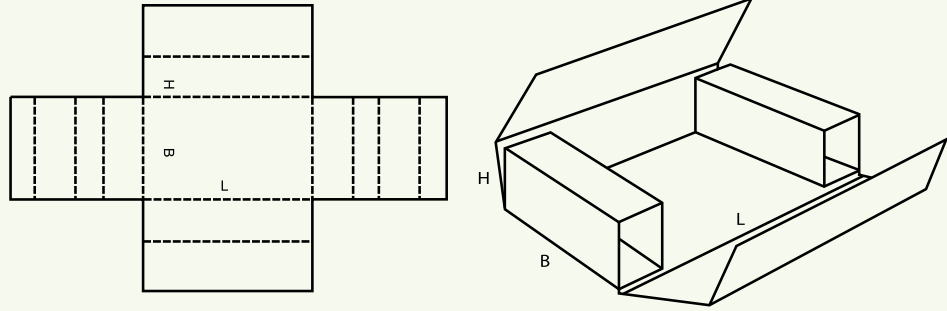


Large Format Case

Diecutting

Same as above but with flaps meeting on the other side

0403

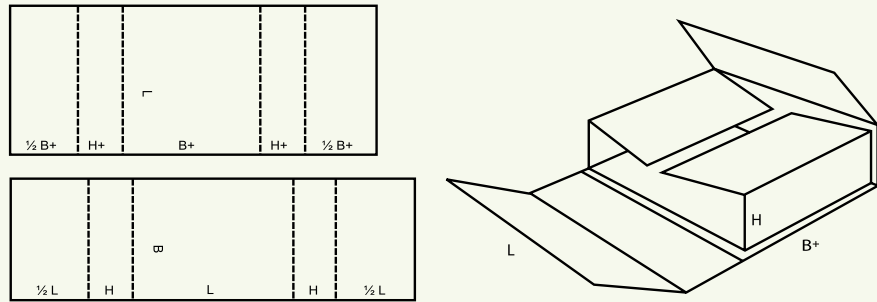


Buffer edge wrap, great for artwork

Large Format Case

Diecutting

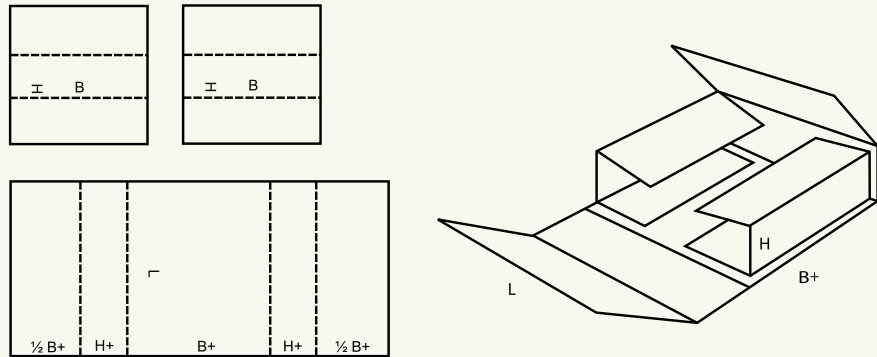
0404



Two panel wrap

Diecutting

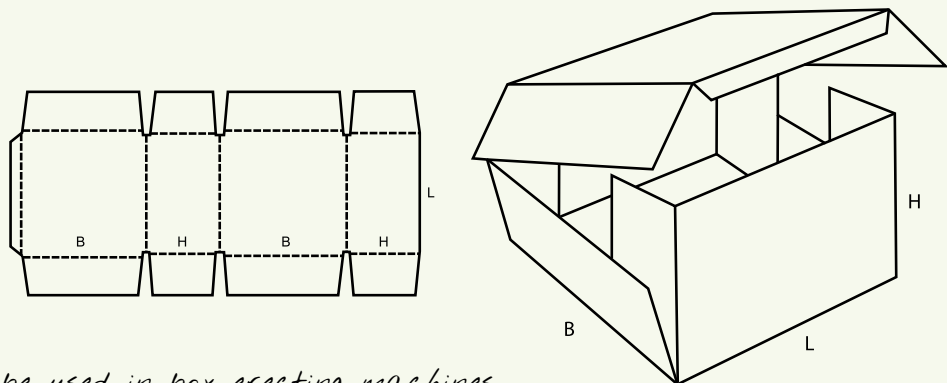
0405



Three piece wrap, used with products that may vary in size

Diecutting

0406



Angled edges, can be used in box erecting machines

Casemaker

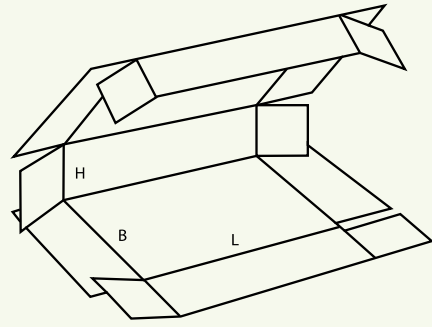
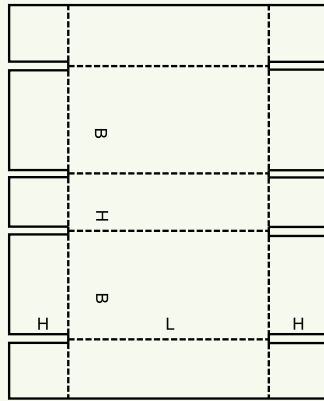
Large Format Case

Diecutting

Glued or Stitched

0409

Five panel wrap, helpful with large format and heavy panels



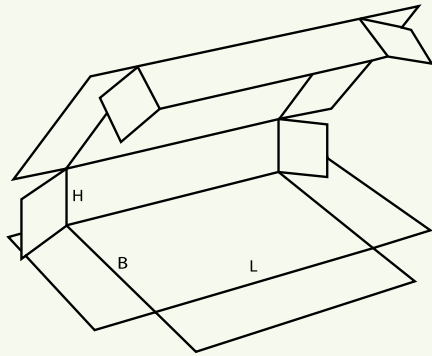
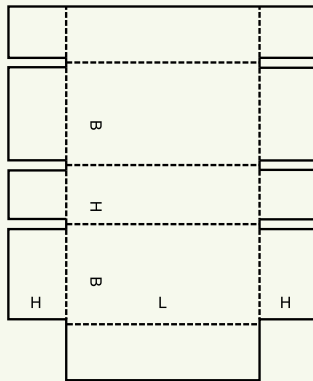
Casemaker

Large Format Case

Diecutting

0410

Five panel wrap with the tabs removed, allows for external closure



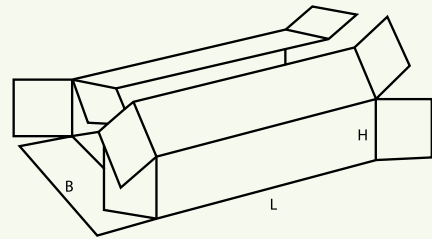
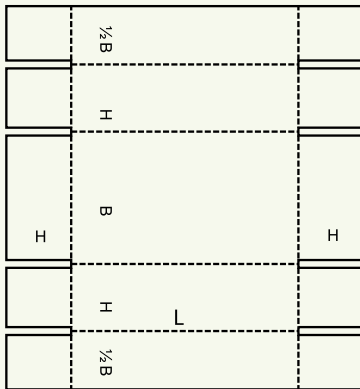
Casemaker

Large Format Case

Diecutting

0411

Five panel wrap with central seal



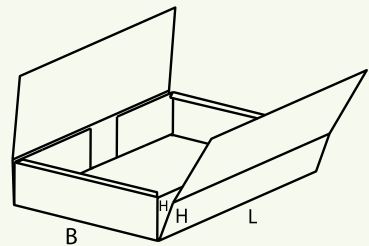
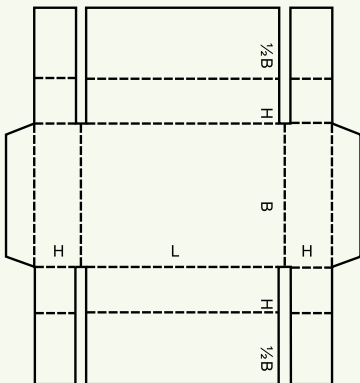
Casemaker

Large Format Case

Diecutting

0412

Five panel wrap with edge protection

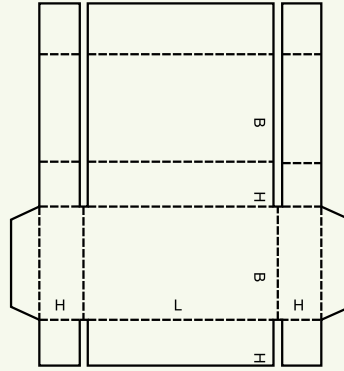


Casemaker

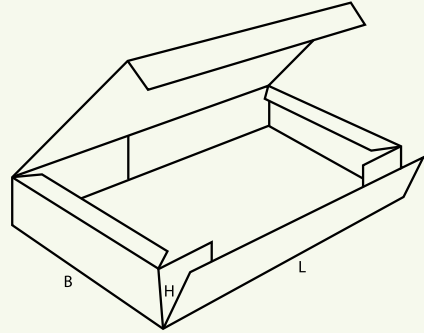
Large Format Case

Diecutting

0413



Five panel wrap with overlapping top, easier to seal the edge

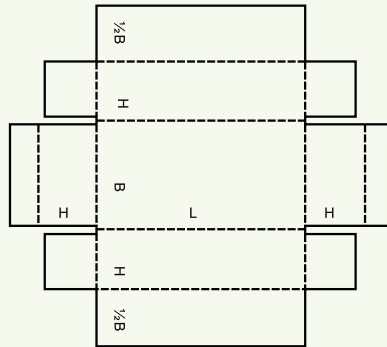


Casemaker

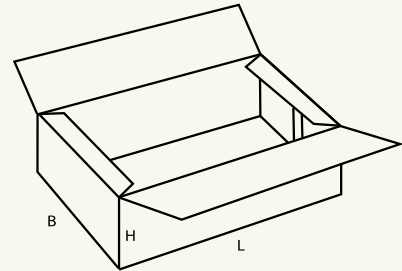
Large Format Case

Diecutting

0415



Wrap around style, central seal

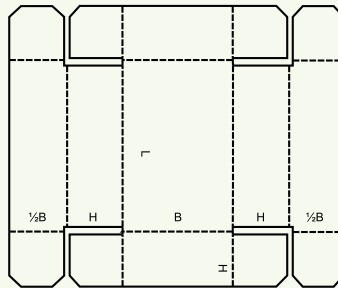


Casemaker

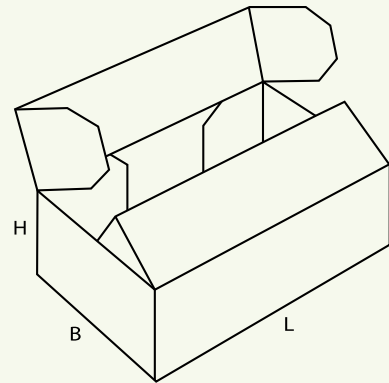
Large Format Case

Diecutting

0416

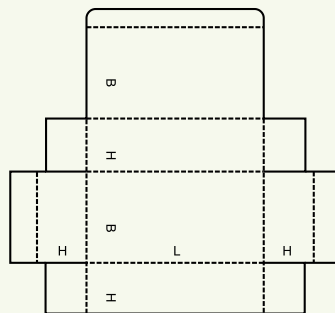


Same as above 0415 but with tuck in flaps

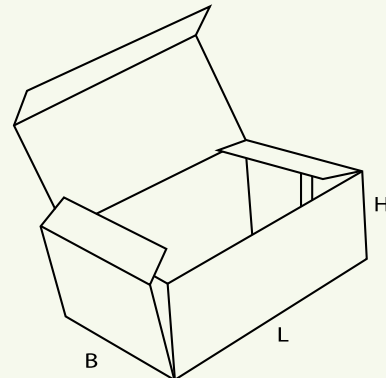


Diecutting

0420

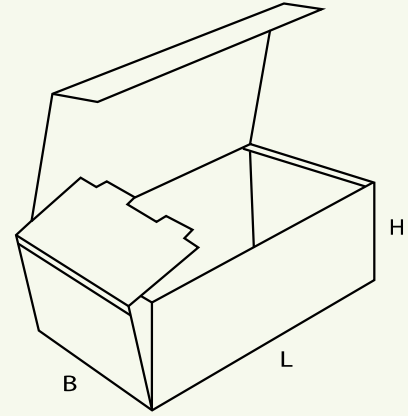
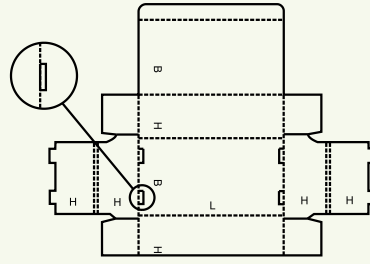


Friction locking tray and lid



Diecutting

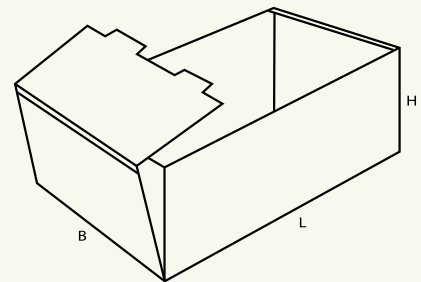
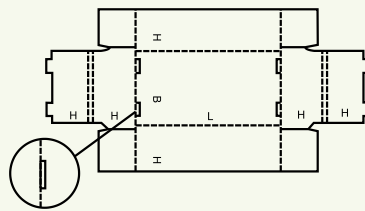
0421



Diecutting

Tab in top closure, with locking tab sides

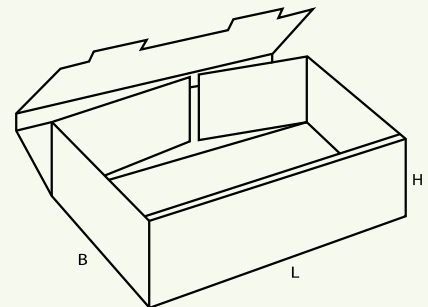
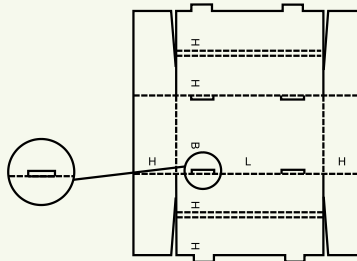
0422



Diecutting

Self erect tray, probably the most common of all self erect trays

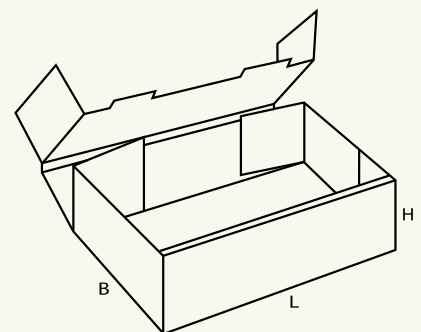
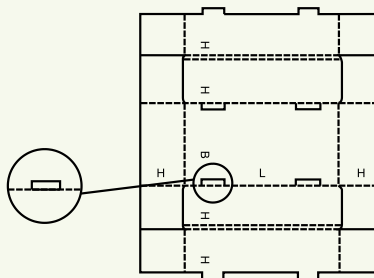
0423



Diecutting

Tabs locking the opposite to an 0422, helpful if the length is long

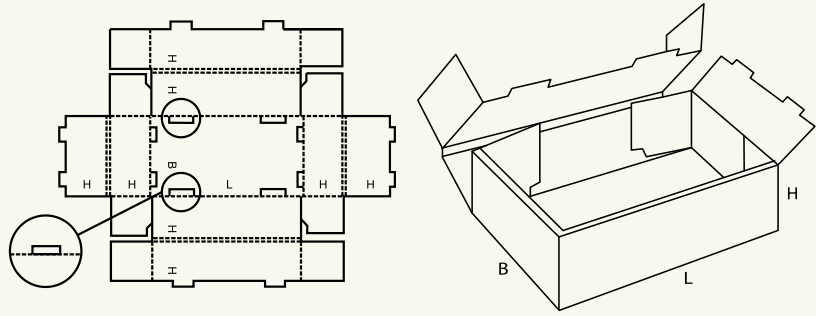
0424



Diecutting

Locking tab closure with additional layers on the end for strength

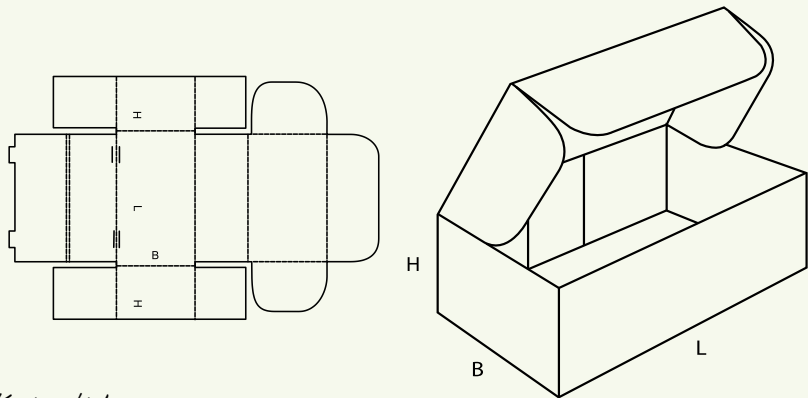
0425



Similar to 0424 but with four sides of locking tabs

Diecutting

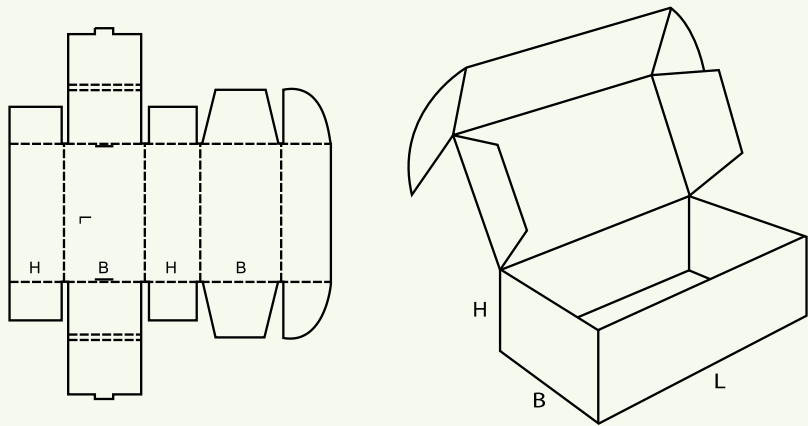
0426



Self erect with internal tuck in lid

Diecutting

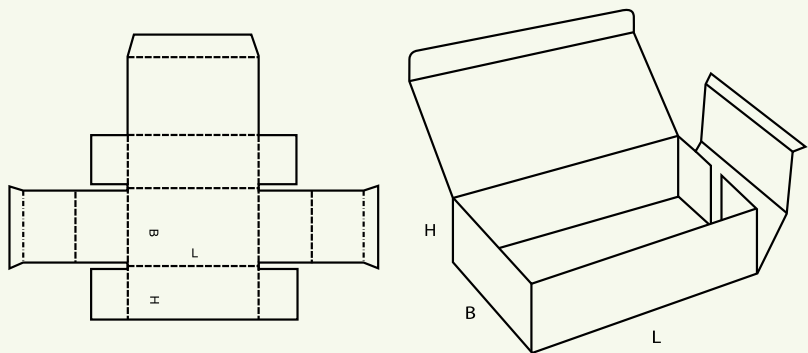
0427



Self erect with external tuck in lid

Diecutting

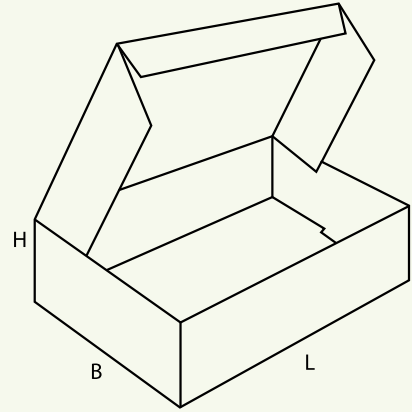
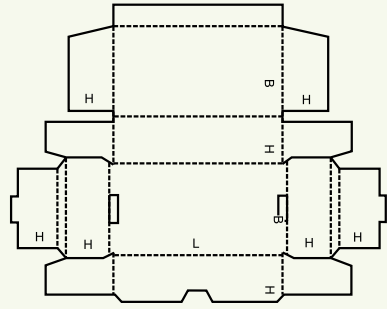
0428



Friction locking box and lid

Diecutting

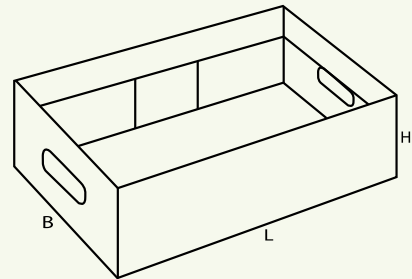
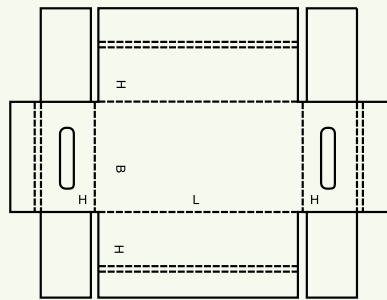
0429



Diecutting

Very similar to an 0426

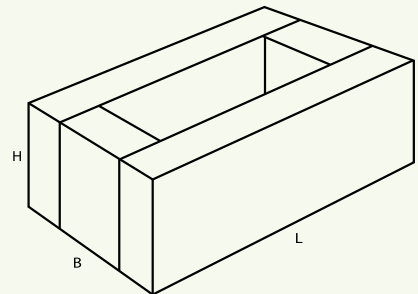
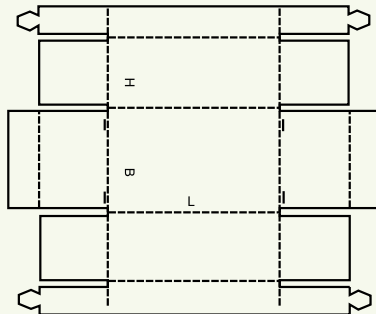
0430



Diecutting

Fold in tops on a tray (often called bakers trays and have stacking ability)

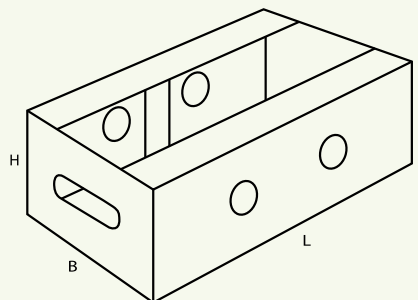
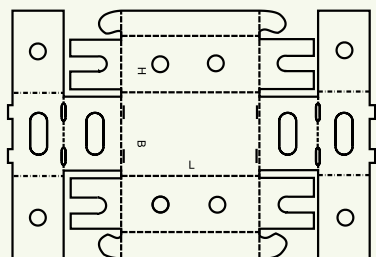
0431



Diecutting

Locking tabs on a bakers tray

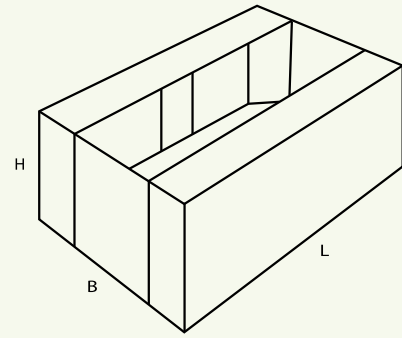
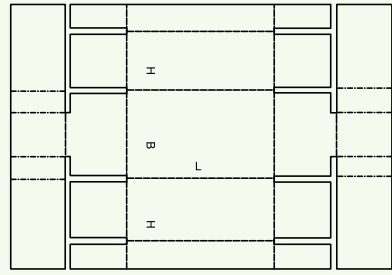
0432



Diecutting

Bakers tray with holes, sometimes for fresh produce

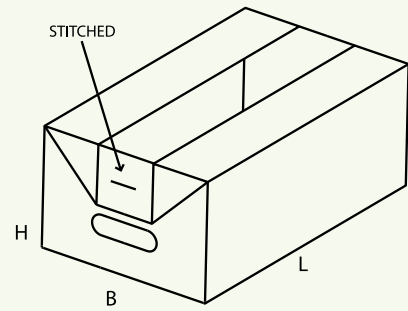
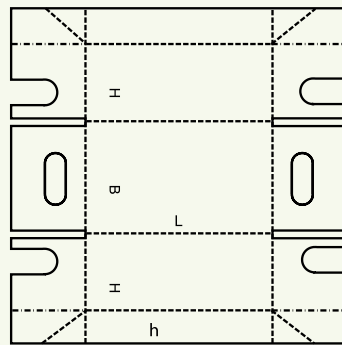
0433



Diecutting

Bakers tray, again designed to be able to stack

0434

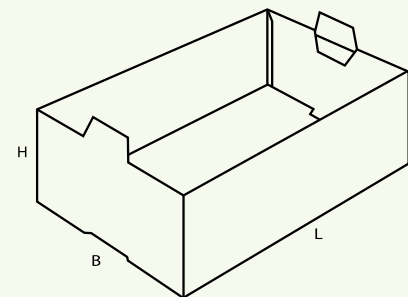
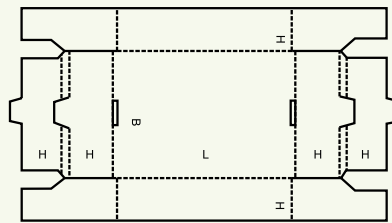


Diecutting

Glued or Stitched

Same again with a stitched seal to hold

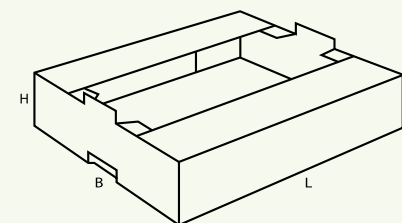
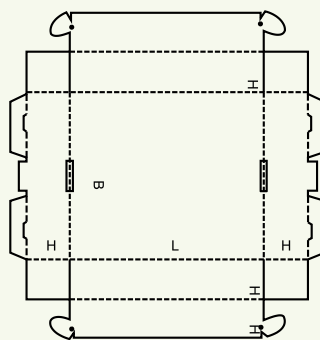
0435



Diecutting

Small vertical tabs, usually modified to stack into each other

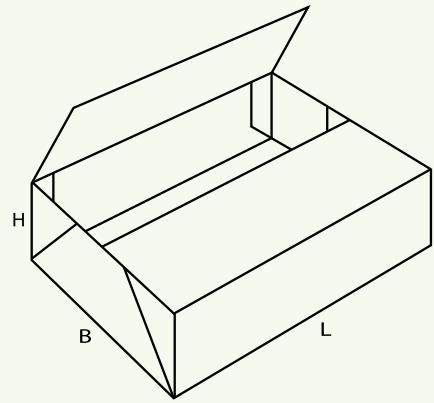
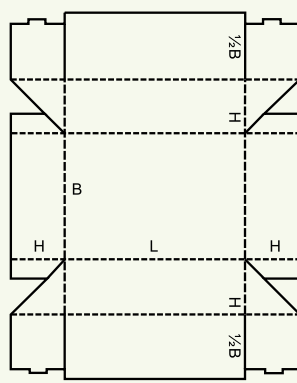
0436



Diecutting

Large flat panel version of a bakers tray

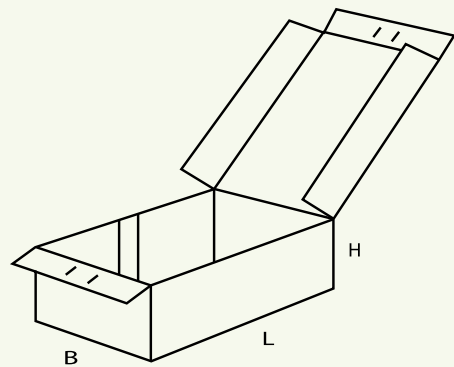
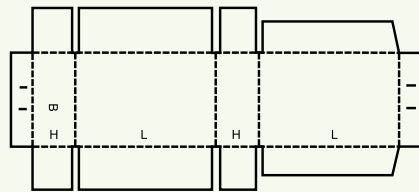
0437



A very unique tray with flap opening

Diecutting

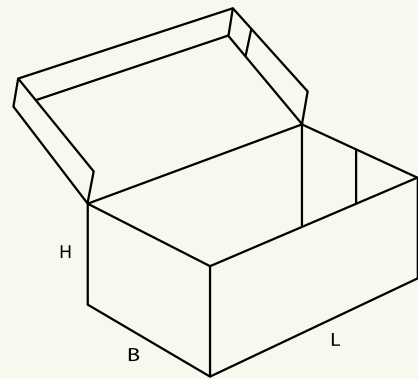
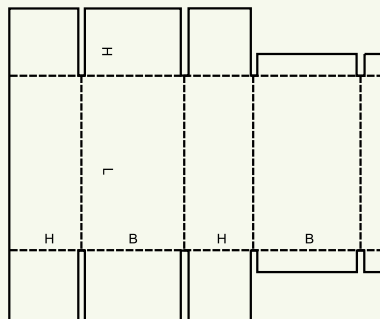
0440



Tab seal box

Diecutting

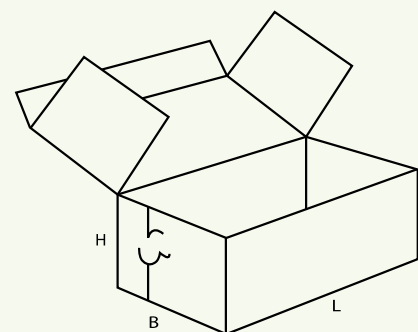
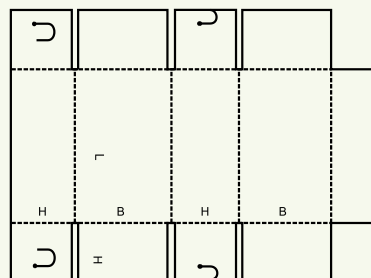
0441



Very basic looking archive box

Diecutting

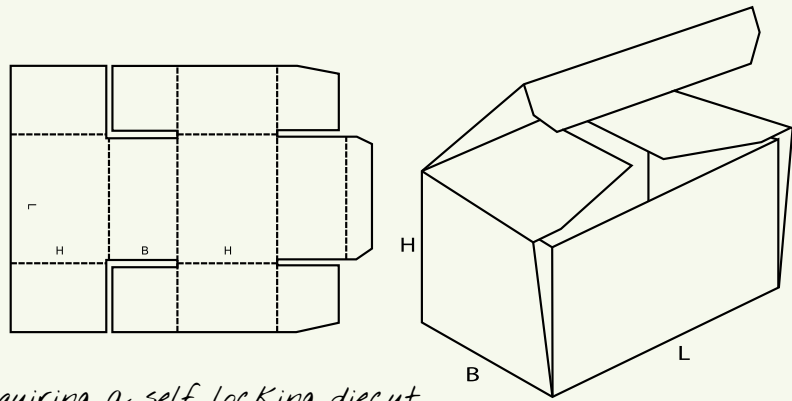
0442



Small tab in sections to hold the box closed

Diecutting

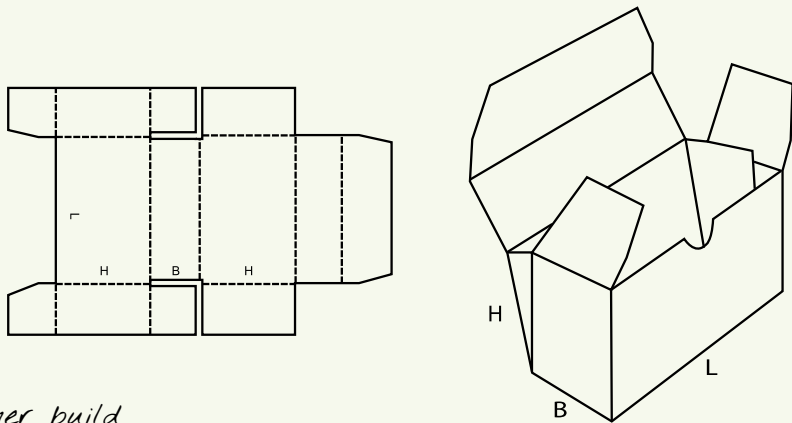
0443



Great for taller products requiring a self locking diecut

Diecutting

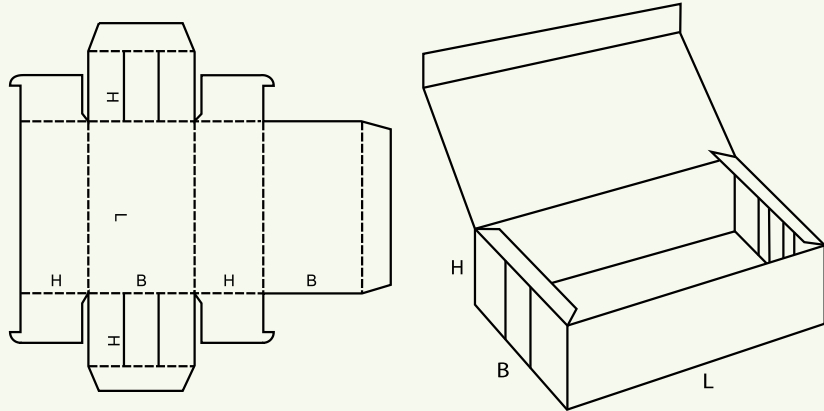
0444



Similar to 0443 but a slimmer build

Diecutting

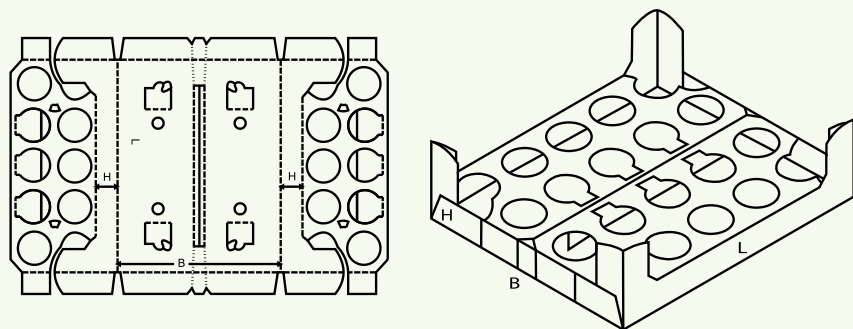
0445



Friction locking version

Diecutting

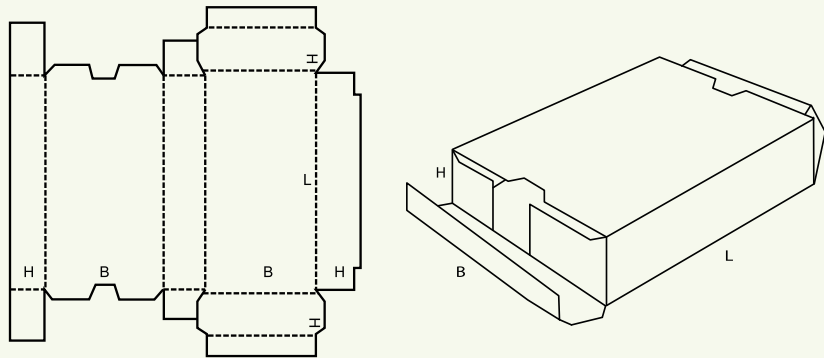
0446



Used for cans or tins

Diecutting

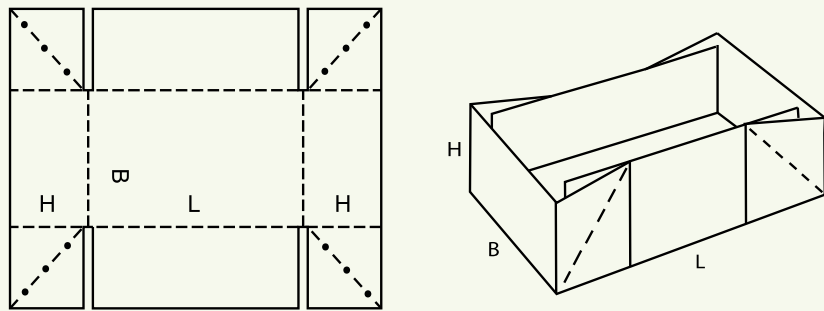
0447



Unique box with friction locking ends

Diecutting

0448

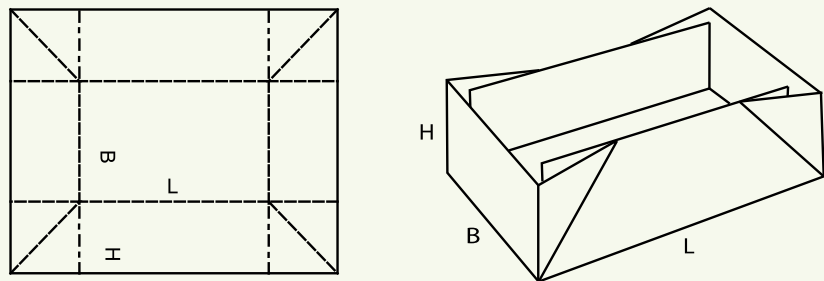


Creased corners to allow it to fold flat post production

Diecutting

Glued or Stitched

0449

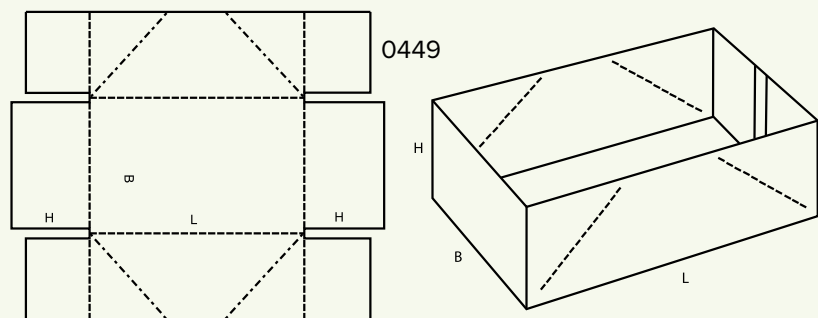


Creased corners to allow it to fold flat post production, had added slots

Diecutting

Glued or Stitched

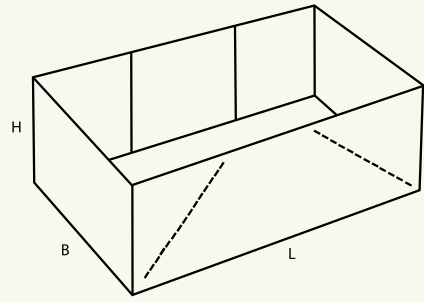
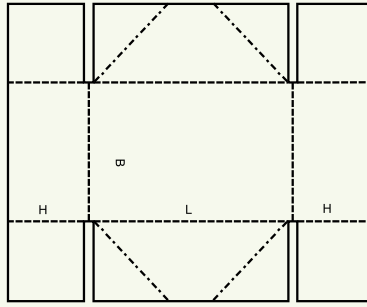
0450



Slotted version to allow more movement when flattening

Diecutting

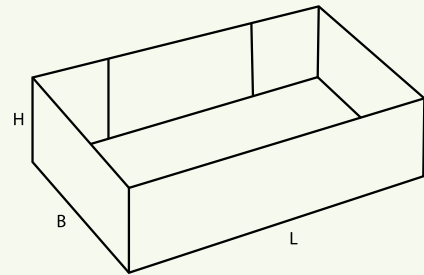
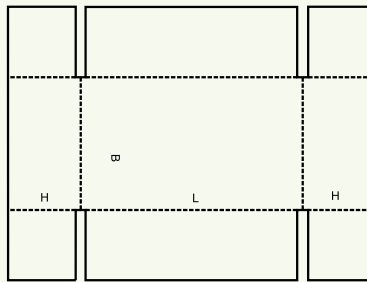
0451



Diecutting

Same as 0450 except the slots are in the other direction

0452



Casemaker

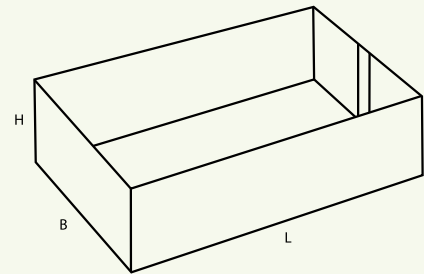
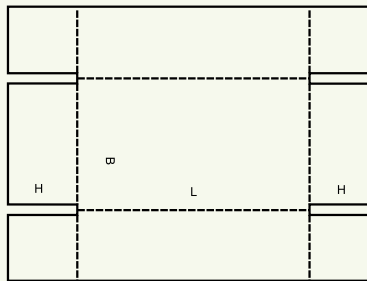
Large Format Case

Diecutting

Glued or Stitched

Basic cap, slots in the length

0453



Casemaker

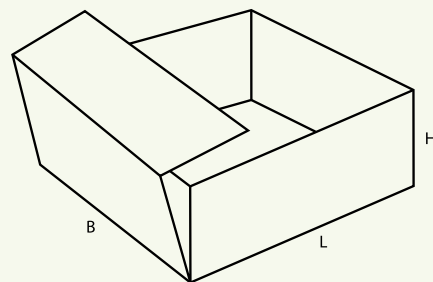
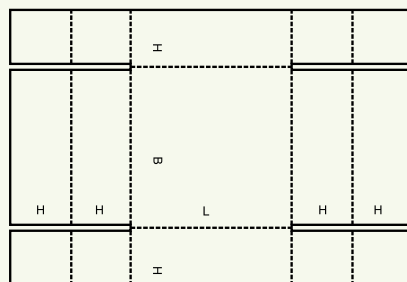
Large Format Case

Diecutting

Glued or Stitched

Basic cap, slots in the width

0454



Casemaker

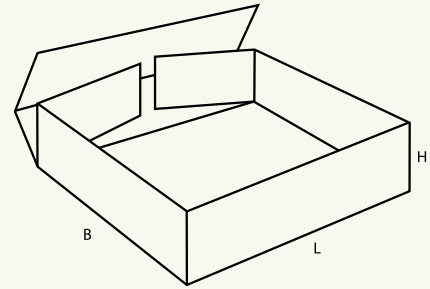
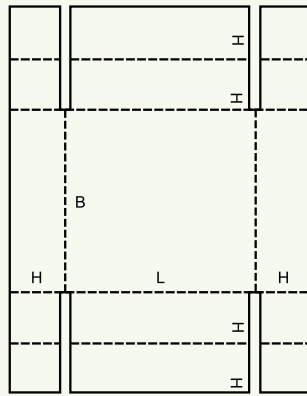
Large Format Case

Diecutting

Glued or Stitched

Fold over sides to allow more strength

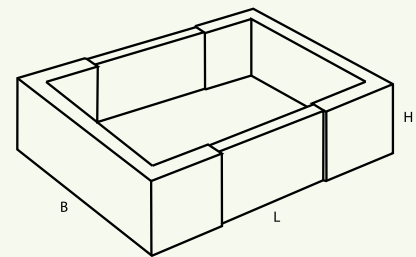
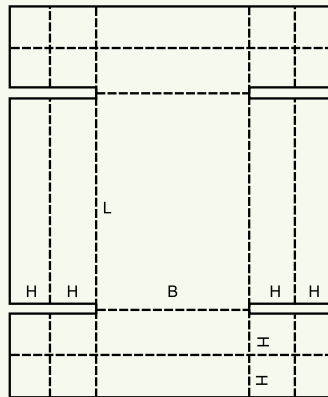
0455



Same as 0454 but with slots in the other direction

Casemaker
Large Format Case
Diecutting
Glued or Stitched

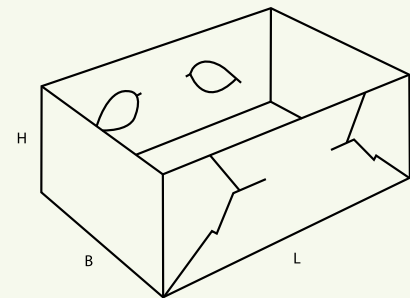
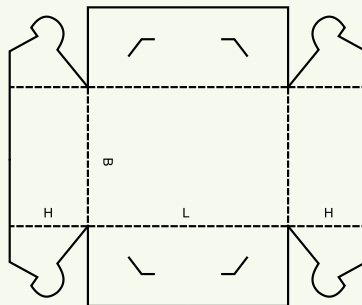
0456



Multi sided fold over for strength

Casemaker
Large Format Case
Diecutting

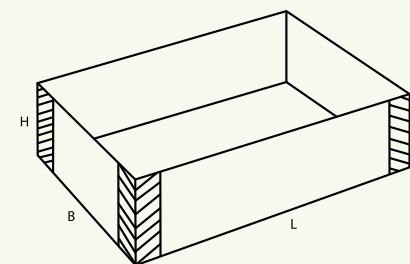
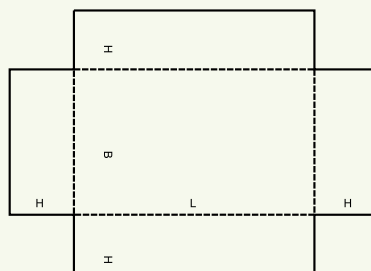
0457



Tab in sections for assembly

Diecutting

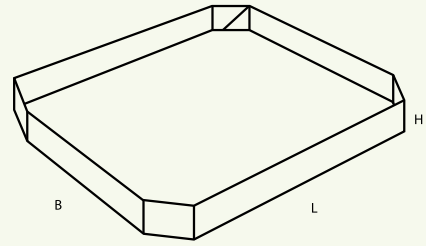
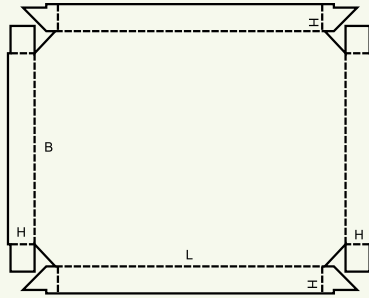
0458



Basic cap, sometimes used with tape assembly

Casemaker
Large Format Case
Diecutting

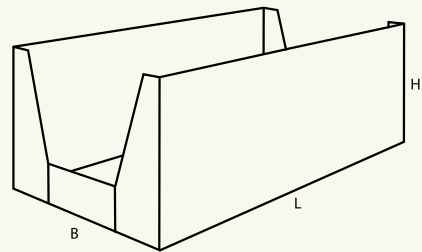
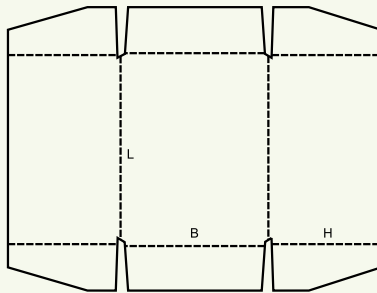
0459



Diecutting

Corners sealed tray

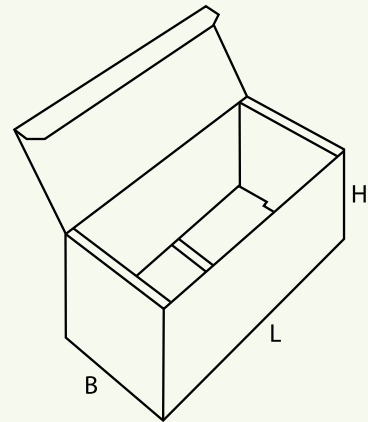
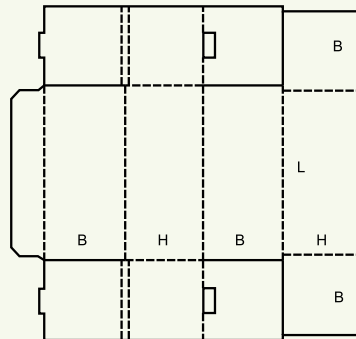
0460



Diecutting

Shelf type tray

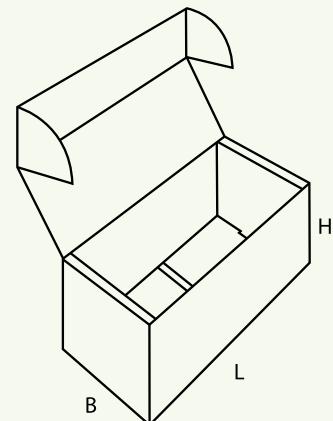
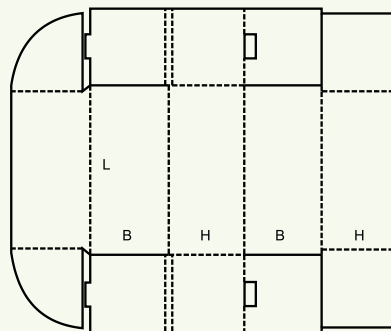
0470



Diecutting

Similar to an 0443 style

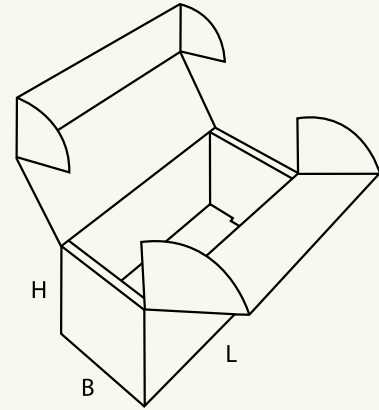
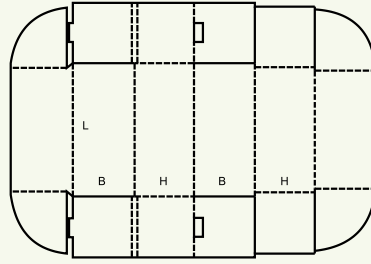
0471



Diecutting

Same as 0470 but with internal tuck in tabs

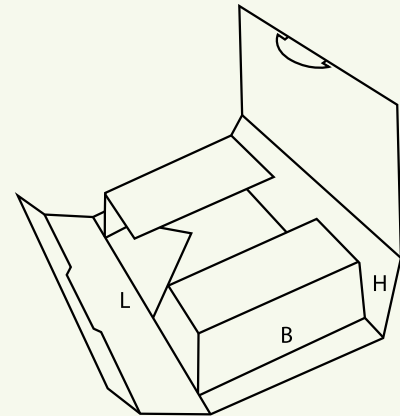
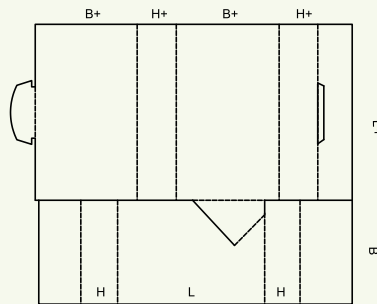
0472



Double top flap version of 0470

Diecutting

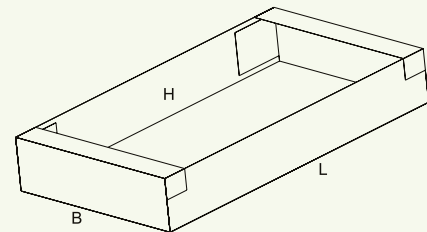
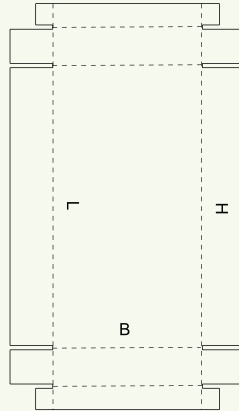
0473



Twist lock wrap, put the flutes in the same direction so can alternate the height

Diecutting

0480



European standard tray

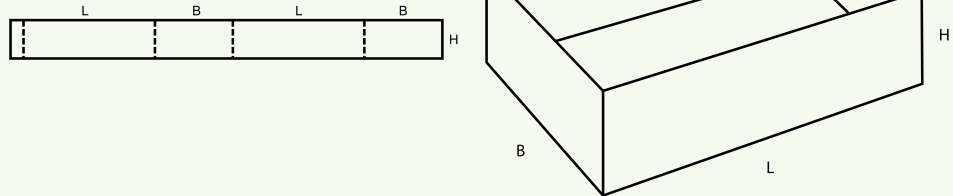
Diecutting



◆ 0500

Slide-type boxes consist of several pieces of liners and sleeves sliding in different directions into each other. This group also includes outside sleeves for other cases.

0501



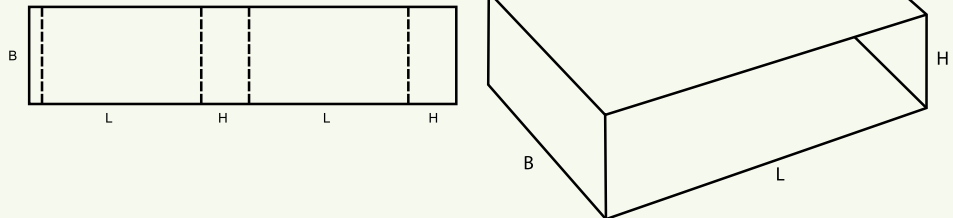
Basic sleeve, usually part of a set or used internally to strengthen

Casemaker

Large Format Case

Glued or Stitched

0502



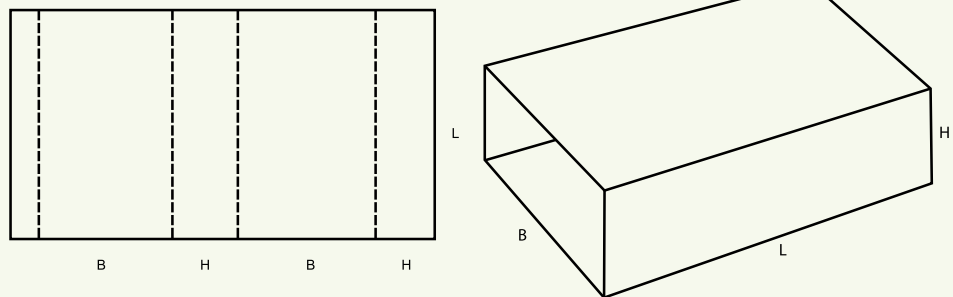
Opening on the length and height side

Casemaker

Large Format Case

Glued or Stitched

0503



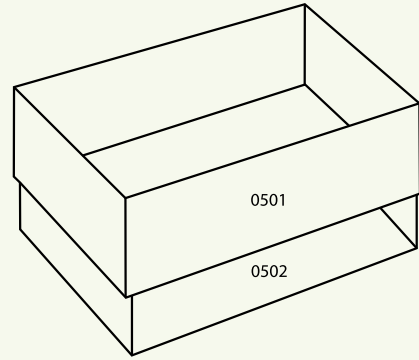
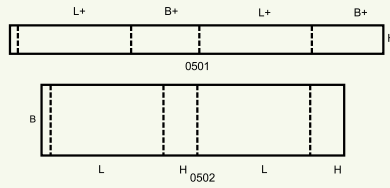
Opening on the width and height side

Casemaker

Large Format Case

Glued or Stitched

0504



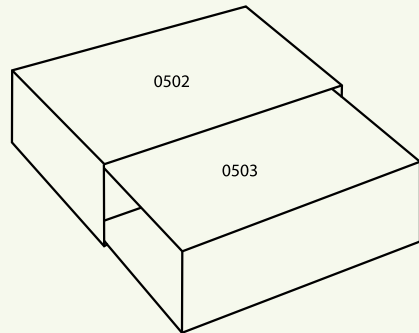
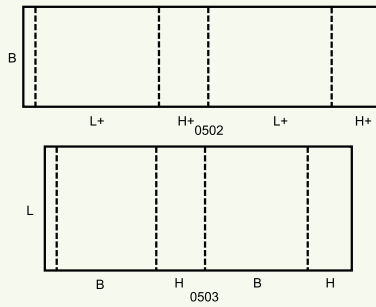
Set designed to close all sides made of an 0501 & 0502

Casemaker

Large Format Case

Glued or Stitched

0505



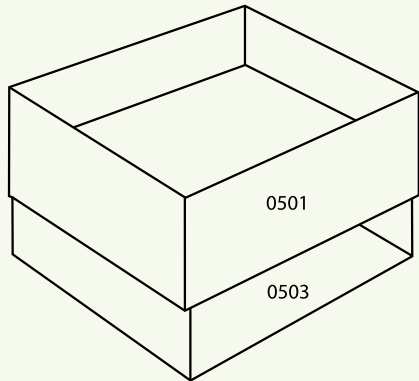
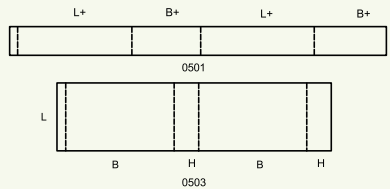
Other version of the 0504 made up of 0502 & 0503

Casemaker

Large Format Case

Glued or Stitched

0507



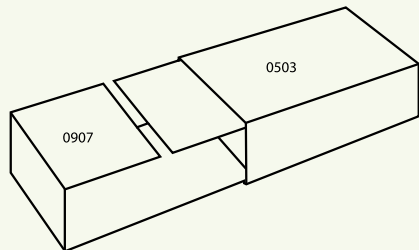
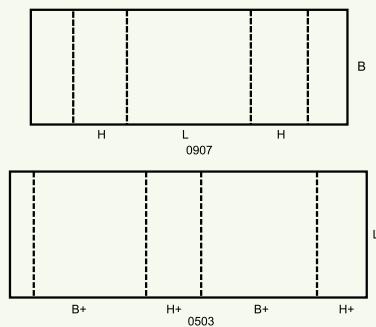
Another opening side made of an 0501 & 0503

Casemaker

Large Format Case

Glued or Stitched

0509

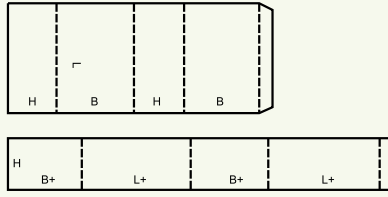


Slide closure set made of 0907 & 0503

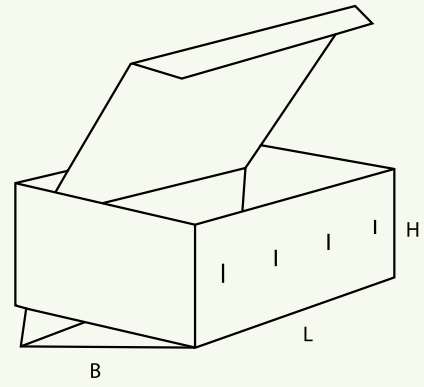
Casemaker

Large Format Case

0510



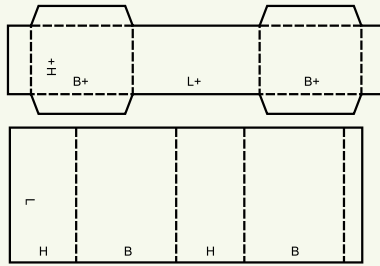
Enclosure made with sealing the wrap and then applying the top flap



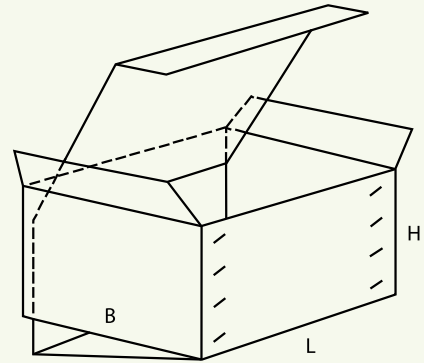
Casemaker

Diecutting

0511



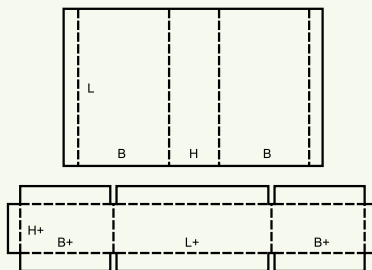
Enclosure made with sealing the wrap and then applying the top flap



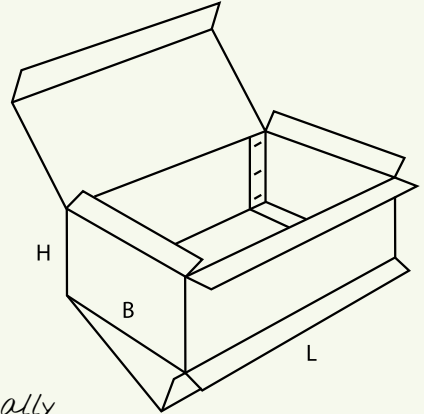
Casemaker

Diecutting

0512



Similar build up to 0510 & 0511, assembly made internally



Casemaker

Diecutting

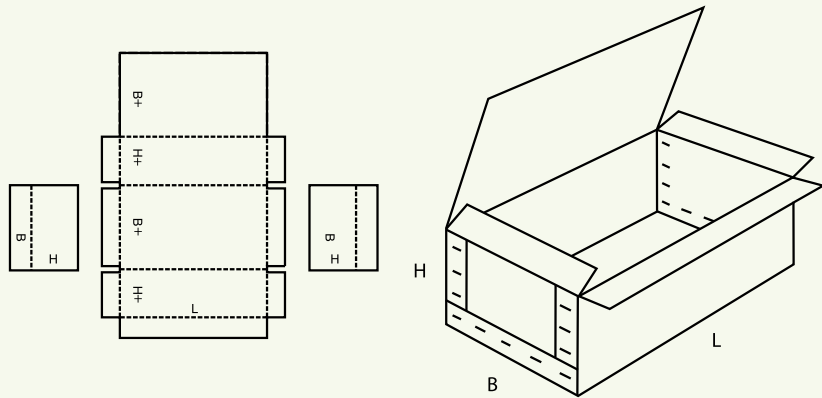


◆ 0600

Rigid-type boxes consist of two separate end pieces and a body and require stitching or a similar operation before they can be used.

0601

Stitched assembled case, can be used in heavy products where assembly around the product is required

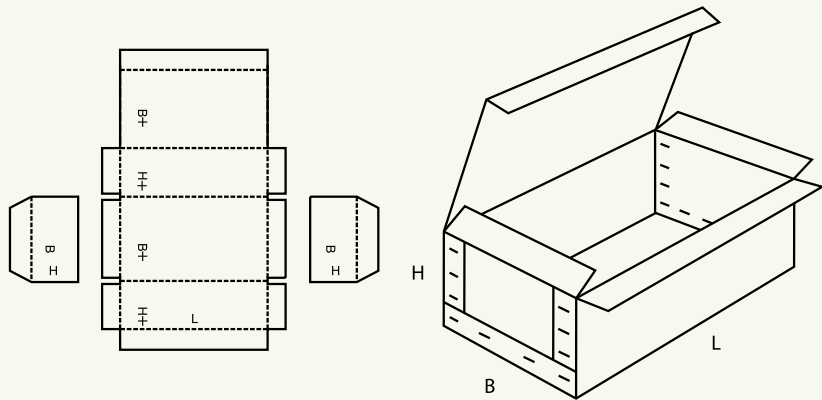


Diecutting

Basic Sheet or Creased Sheet

0602

Stitched assembled case, can be used in heavy products where assembly around the product is required

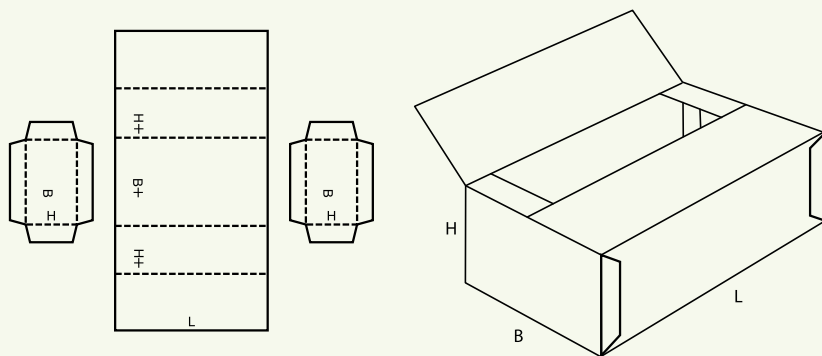


Diecutting

Basic Sheet or Creased Sheet

0605

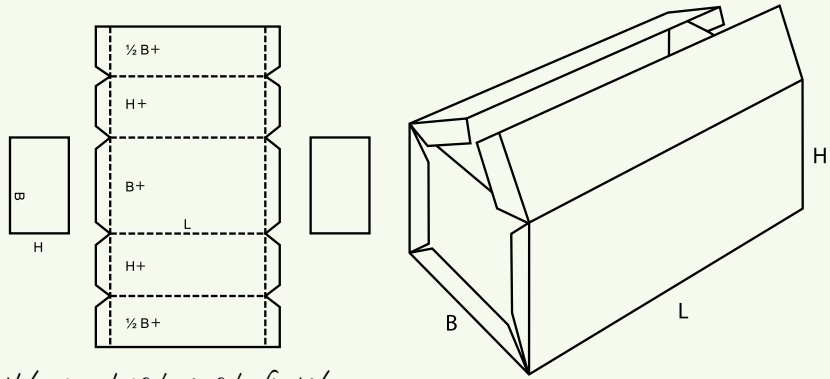
Stitched assembled case with central seal finish



Diecutting

Basic Sheet or Creased Sheet

0606

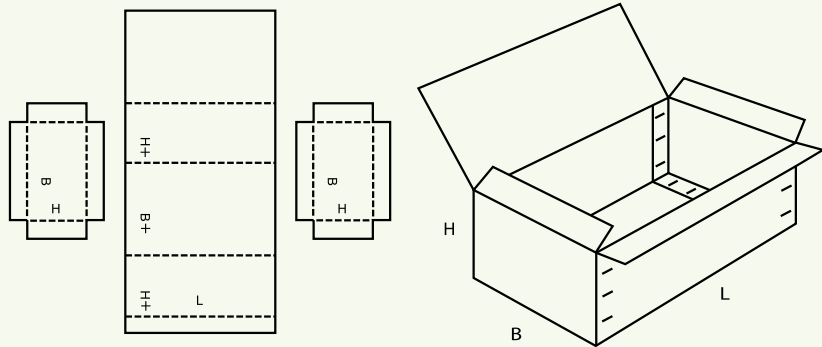


Stitched assembled case with central seal finish

Diecutting

Basic Sheet or
Crested Sheet

0607

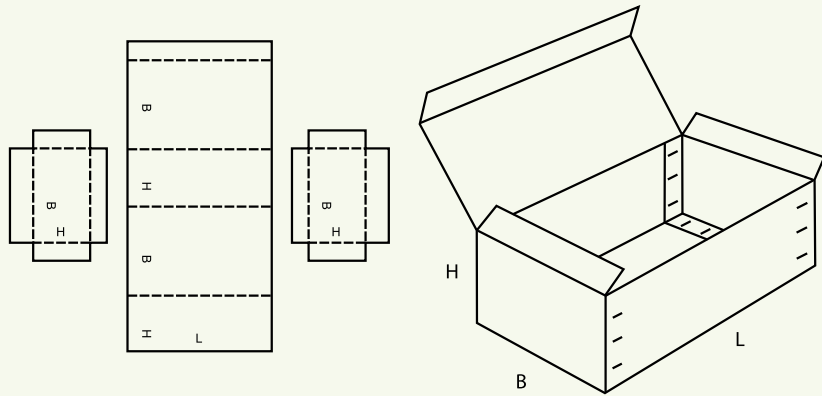


Stitched assembled case, can be used in heavy products where assembly around the product is required

Diecutting

Basic Sheet or
Crested Sheet

0608

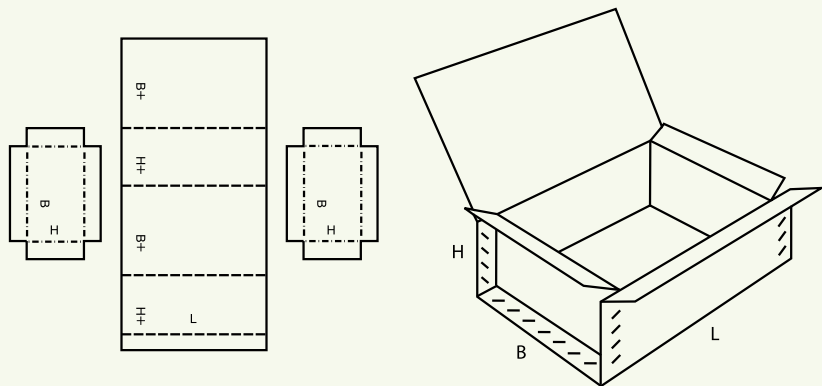


Stitched assembled case, can be used in heavy products where assembly around the product is required

Diecutting

Basic Sheet or
Crested Sheet

0610

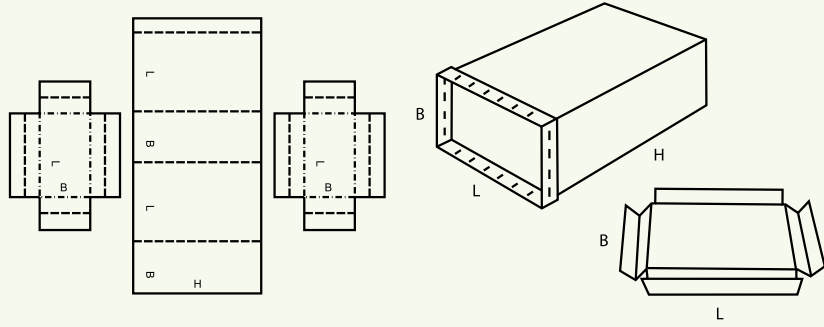


Stitched assembled case, can be used in heavy products where assembly around the product is required

Diecutting

Basic Sheet or
Crested Sheet

0615

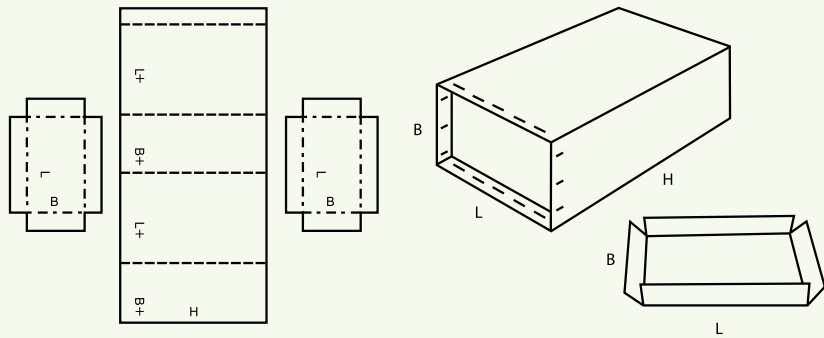


Stitched assembled case that wraps around products

Diecutting

Basic Sheet or
Cleared Sheet

0616

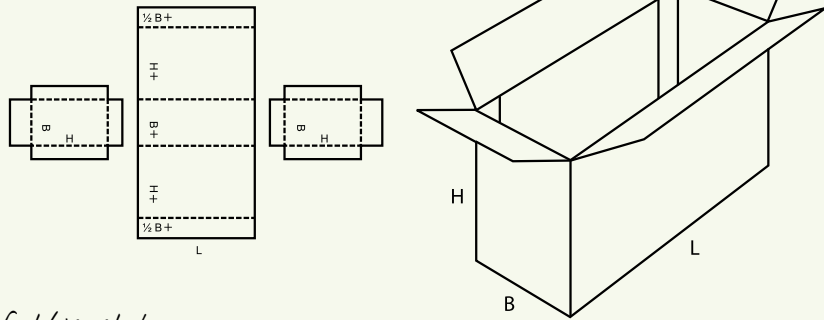


Stitched assembled case that wraps around products

Diecutting

Basic Sheet or
Cleared Sheet

0620

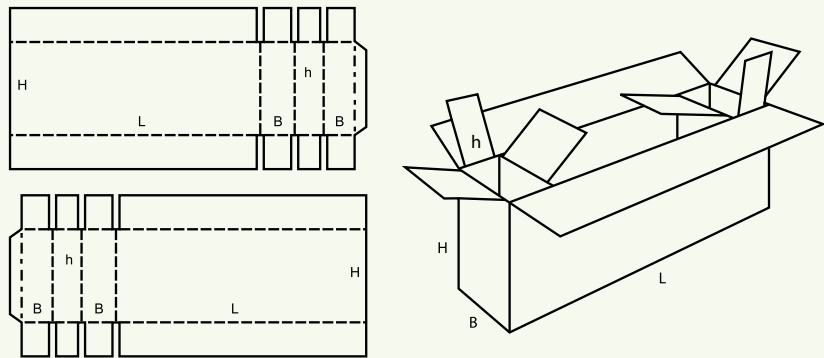


Vertical standing version of this style

Diecutting

Basic Sheet or
Cleared Sheet

0621



Creates a three cell compartment within the case

Casemaker

Diecutting

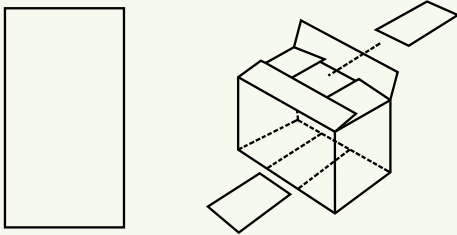
Basic Sheet or
Cleared Sheet



◆ 0900

Interior fitments such as inside liners, pads, partitions, dividers etc, whether tied to Case Design or as singular items. Any shown number of panels is arbitrary and may be increased or decreased as required.

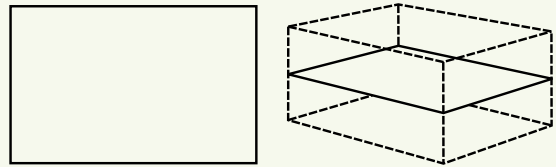
0900



Layerpad that sits between the gaps in an 0201

Basic Sheet or Creased Sheet

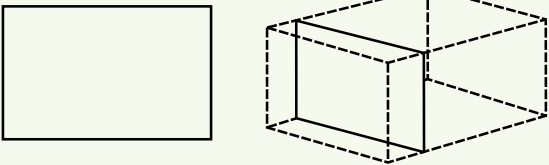
0901



Horizontal layerpad

Basic Sheet or Creased Sheet

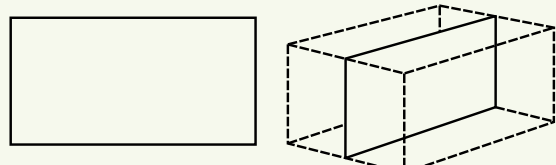
0902



Vertical width layerpad

Basic Sheet or Creased Sheet

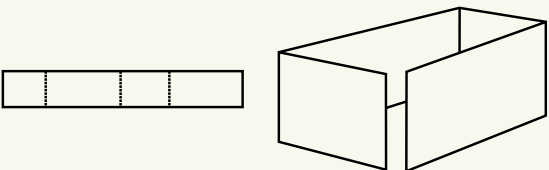
0903



Vertical length layerpad

Basic Sheet or Creased Sheet

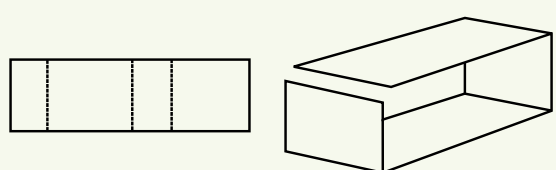
0904



Creased sleeve, used to line internals of boxes

Basic Sheet or Creased Sheet

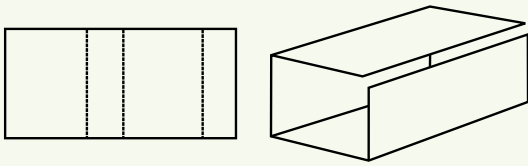
0905



Creased sleeve, used to line internals of boxes

Basic Sheet or Creased Sheet

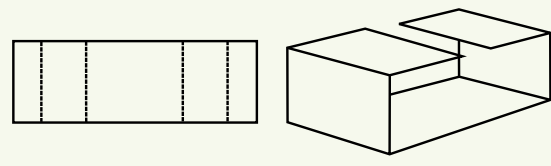
0906



Creased sleeve, used to line internals of boxes

Basic Sheet or Creased Sheet

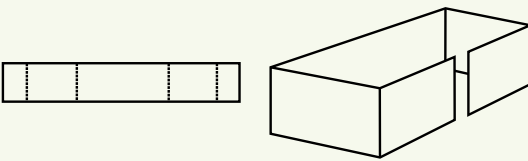
0907



Creased sleeve, used to line internals of boxes

Basic Sheet or Creased Sheet

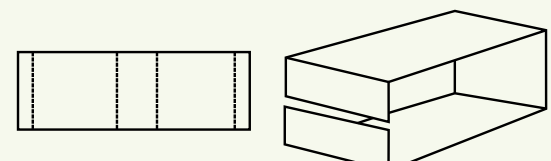
0908



Creased sleeve, used to line internals of boxes

Basic Sheet or Creased Sheet

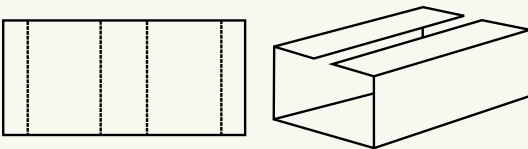
0909



Creased sleeve, used to line internals of boxes

Basic Sheet or Creased Sheet

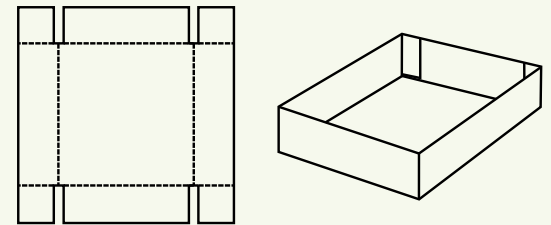
0910



Creased sleeve, used to line internals of boxes

Basic Sheet or Creased Sheet

0911



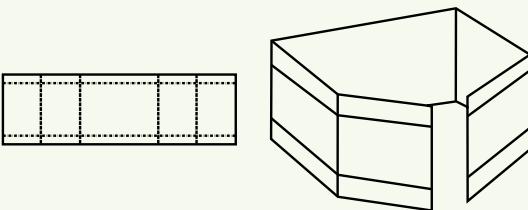
Cap used to fit internally into boxes, possibly to pack out the level

Casemaker

Large Format Case

Diecutting

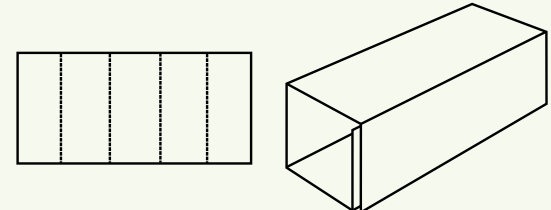
0913



Tube creased fitting, used for packing out sections

Basic Sheet or Creased Sheet

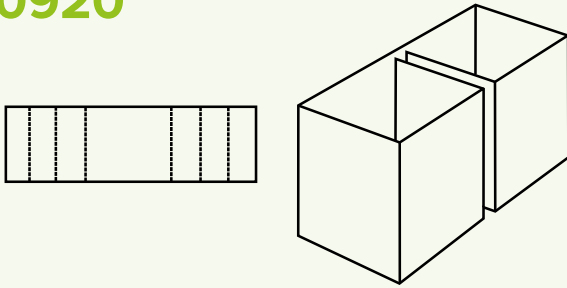
0914



Creased sheet to create a tube style fitting

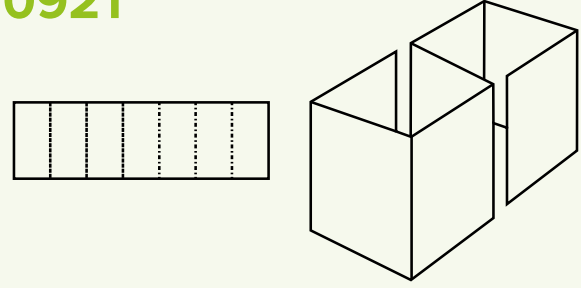
Basic Sheet or Creased Sheet

0920



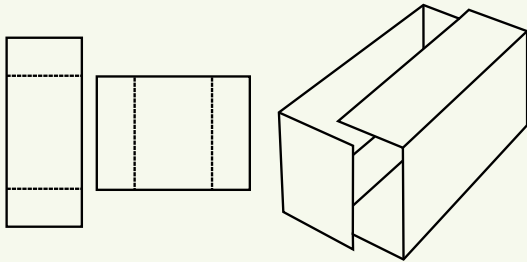
*Crease sheet to create
a duel section internally*

0921



*Crease sheet to create
a duel section internally*

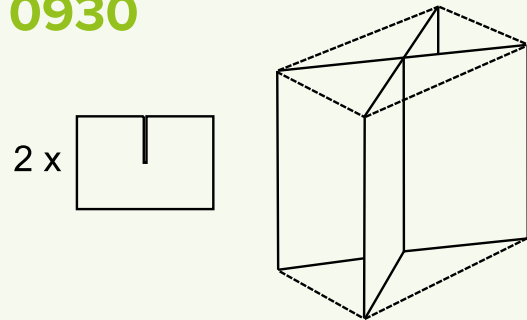
0929



Two piece creased sheet fitment

Basic Sheet or Creased Sheet

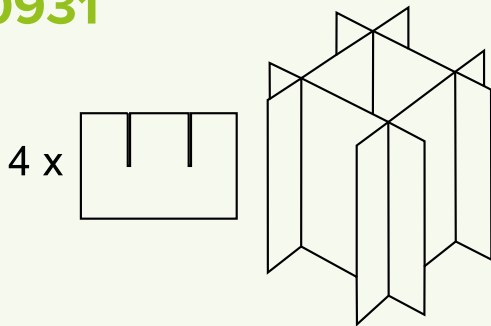
0930



*Cross section two
piece divider for the diagonal*

Basic Sheet or Creased Sheet

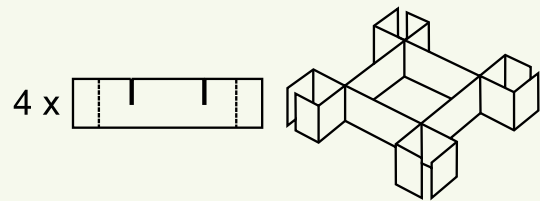
0931



Buffer edge divider set

Basic Sheet or Creased Sheet

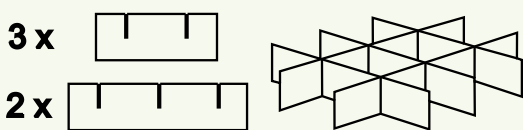
0932



*Creates sections within the
box, great for set assembly*

Basic Sheet or Creased Sheet

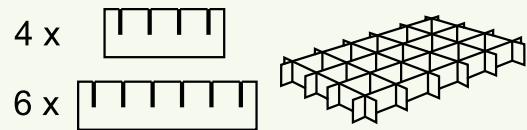
0933



*Standard twelve set
divider (square cell size)*

Basic Sheet or Creased Sheet

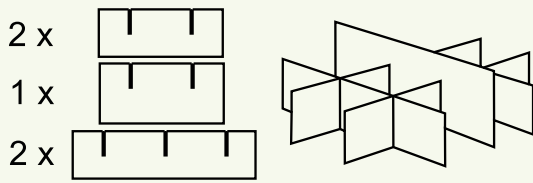
0934



*Standard fifteen cell divider
with buffer (square cell size)*

Basic Sheet or Creased Sheet

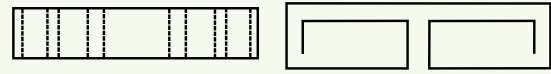
0935



*Standard twelve set divider
(rectangle cell size)*

Basic Sheet or Creased Sheet

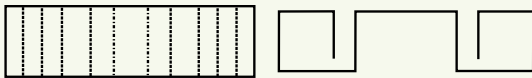
0940



*Helps with buffering
out edges for protection*

Basic Sheet or Creased Sheet

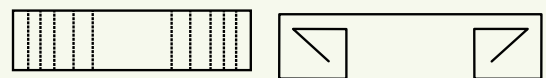
0941



Gully section for products

Basic Sheet or Creased Sheet

0942



Gully section for products

Basic Sheet or Creased Sheet

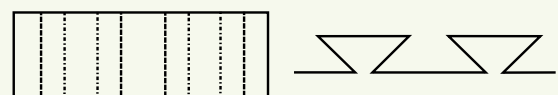
0943



Gully section for products

Basic Sheet or Creased Sheet

0944



*Would help with compression,
difficult to pack*

Basic Sheet or Creased Sheet

0945



*Angles edges for
products to sit within*

Basic Sheet or Creased Sheet

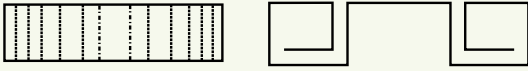
0946



Simple block and gully section

Basic Sheet or Creased Sheet

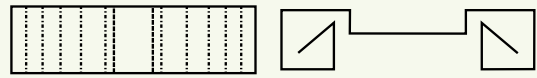
0947



Simple block and gully section

Basic Sheet or Creased Sheet

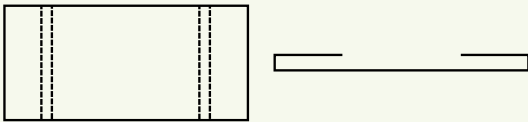
0948



Simple block and gully section

Basic Sheet or Creased Sheet

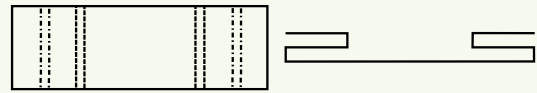
0949



Flat panel insert

Basic Sheet or Creased Sheet

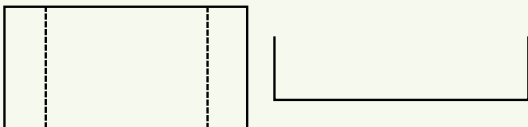
0950



Flat panel insert with another section raised

Basic Sheet or Creased Sheet

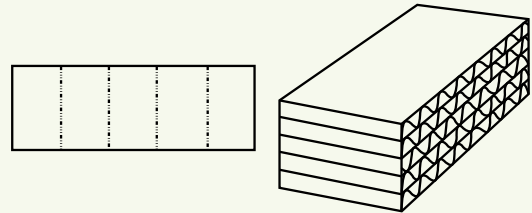
0951



Simple double crease insert

Basic Sheet or Creased Sheet

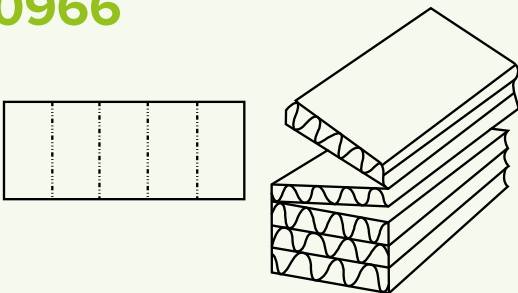
0965



Block section created with reverse sawn sections to fold back on itself

Basic Sheet or Creased Sheet

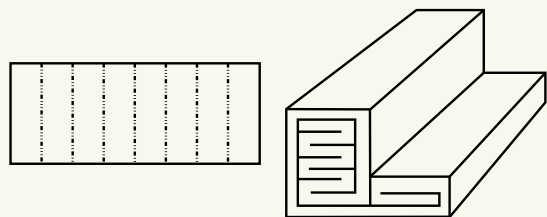
0966



Block section created with reverse sawn sections to fold back on itself

Basic Sheet or Creased Sheet

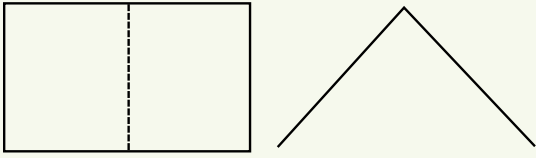
0967



Creates an angled sections

Basic Sheet or Creased Sheet

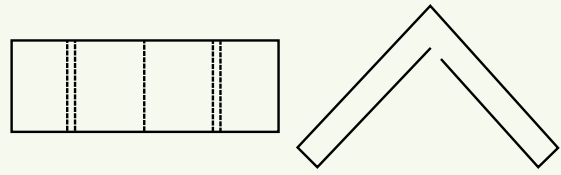
0970



Edge or corner support

Basic Sheet or Creased Sheet

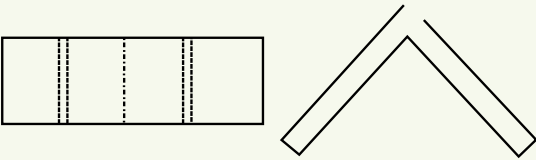
0971



Same as 0970 with a double layer

Basic Sheet or Creased Sheet

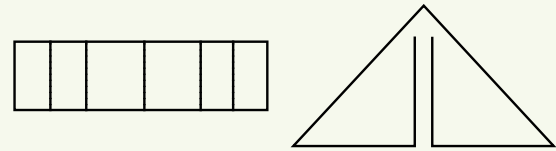
0972



Same as 0971 with the final opening on the opposite side

Basic Sheet or Creased Sheet

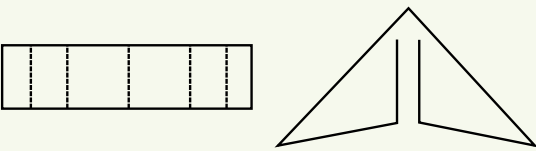
0973



Produces a 90 degree corner section

Basic Sheet or Creased Sheet

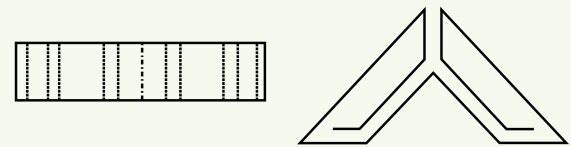
0974



Produces a indented corner section

Basic Sheet or Creased Sheet

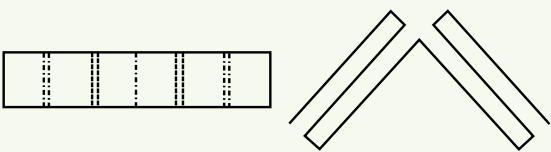
0975



Produces a buffer edge corner section

Basic Sheet or Creased Sheet

0976



Produces a buffer edge corner section

Basic Sheet or Creased Sheet



**A PAS2060
CarbonNeutral
Company**

All of our boxes are certified CarbonNeutral

Sandland  **Packaging**
ANY BOX ANY SIZE
BESPOKE BOX MANUFACTURER

Contact us

Tel: + 44 (0)1902 496925

Email: sales@sandlandpackaging.co.uk

Sandland Packaging
Unit 5
Phoenix Industrial Estate
Loxdale Street
Bilston
West Midlands
WV14 0PR

www.sandlandpackaging.co.uk